

The official seal is your assurance that this product is licensed or manufactured by Nintendo. Always look for this seal when buying video game systems, accessories, games and related products.

Ce sceau officiel est votre garantie que le présent produit est breveté ou manufacturé par Nintendo. Recherchez-le toujours quand vous achetez des appareils de jeu vidéo, des accessoires, des jeux et d'autres produits connexes.

El sello oficial es su ratificación de que este producto tiene licencia o es manufacturado por Nintendo. Busque siempre este sello al comprar sistemas de vídeo juegos, o accesorios, vídeo juegos, y productos relacionados.



FOR ADDITIONAL INFORMATION OR ASSISTANCE ON THE NINTENDO WI-FI CONNECTION, GO TO

WWW.NINTENDOWIFI.COM
(USA, Canada and Latin America)

or call 1-800-895-1672 (USA and Canada only),

TTY Hearing Impaired: 800-422-4281



Nintendo of America Inc.

P.O. Box 957, Redmond, WA 98073-0957 U.S.A.

59429C

PRINTED IN USA



Nintendo® Wi-Fi USB Connector Instruction Booklet

Français (Pages 13-27)

Español (Páginas 29-43)

TABLE OF CONTENTS

INTRODUCTION	1
PRECAUTIONS AND USAGE GUIDELINES	2
COMPONENTS	3
INSTALLATION INSTRUCTIONS	4-7
WIRELESS COMMUNICATION GUIDELINES	8
TROUBLESHOOTING	9
WARRANTY AND SERVICE INFORMATION	10-11
REGULATIONS FOR EQUIPMENT USE IN USA AND CANADA	12

NOTE: The Nintendo Wi-Fi USB Connector is not compatible with USB hubs, or with USB 1.0/2.0 interface cards or boards.

NOTE: The Nintendo Wi-Fi USB Connector may get warm during normal operation.

Nintendo Wi-Fi USB Connector operating requirements:

OS: Windows XP
Minimum CPU: Intel Pentium (or compatible) 800Mhz
Minimum Memory: 256MB
Minimum Hard Drive space: 10MB

© 2007 Nintendo. TM and ® are trademarks of Nintendo. © BUFFALO INC. 2005. Windows® is either a registered trademark or trademark of Microsoft Corporation in the United States and/or other countries.

INTRODUCTION

The Nintendo Wi-Fi USB Connector is a Nintendo DS and/or Wii™ dedicated wireless access point that can be installed in a USB port on a PC. **Your PC must be running the Windows® XP operating system for this device to work.**

Up to five Nintendo DS or Wii systems can connect up to the internet at one time using this USB connector.

IMPORTANT: Load the enclosed CD ROM into your PC and install the software BEFORE you insert the Nintendo Wi-Fi USB Connector into your PC's USB port. (See page 4.)

This instruction booklet will show you how to install and set up the Nintendo Wi-Fi USB Connector on your PC. To complete this setup and play Nintendo DS or Wii games over the internet, you will need the following, in addition to this USB connector:

1. A Nintendo DS or Wii video game system.
2. A Nintendo DS or Wii game that includes the Nintendo Wi-Fi Connection feature. Look for this icon on Nintendo DS or Wii game packaging for games that include this feature.
3. A PC running the Windows XP operating system with an active broadband internet account.



NOTE: Your PC must be turned on when using this USB Connector.

1

PRECAUTIONS AND USAGE GUIDELINES

⚠ WARNING - Radio Frequency Interference

The Nintendo Wi-Fi USB Connector can emit radio waves that can affect the operation of nearby electronics, including cardiac pacemakers.

- Do not operate the USB connector within 9 inches of a pacemaker.
- If you have a pacemaker or other implanted medical device, do not use the USB connector without first consulting your doctor or the manufacturer of your medical device.
- Observe and follow all regulations and rules regarding use of wireless devices in locations such as hospitals, airports, and on board aircraft. Operation in those locations may interfere with or cause malfunctions of equipment, with resulting injuries to persons or damage to property.

1. The Nintendo Wi-Fi USB Connector is a precision electronic device that can be damaged by direct physical impact. Do not drop, hit or otherwise abuse the USB connector.
2. Do not disassemble or try to repair the USB connector. Doing so voids your warranty.
3. Do not use or store the USB connector where it may contact moisture, dirt, dust, lint, or other foreign material.
4. Hold the USB connector straight when inserting it into USB Port.
5. Do not step on, sharply pull or bend the USB cable.
6. Do not expose the USB connector to extreme heat or cold or expose it to direct sunlight for extended periods of time.

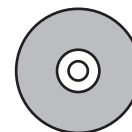
2

COMPONENTS

Nintendo Wi-Fi USB Connector CD ROM

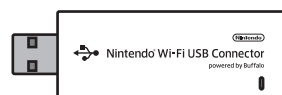
Contains installation software for the USB connector.

IMPORTANT: Insert this disc and follow the on-screen directions BEFORE plugging the USB connector into the PC's USB port.



Nintendo Wi-Fi USB Connector

Nintendo DS and/or Wii dedicated wireless access point which plugs into a USB port on a PC running Windows XP.



USB Cable

This cable can be used to add an extension to the USB port on a PC. Use the cable if there isn't enough room to plug the USB connector directly into the USB port, or if you need to adjust the position of the USB connector for better wireless reception.



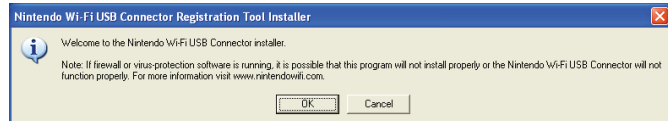
3

INSTALLATION INSTRUCTIONS

Installing the Software

NOTE: You may have to temporarily turn off your firewall BEFORE beginning installation. Be sure to turn it back on when installation is complete.

1. Start up your PC and load the CD ROM into the PC's CD-ROM drive.
2. An installation window will appear on your PC screen, as shown. Click "OK" to begin installation.



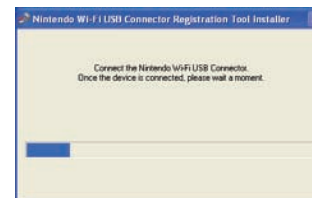
3. Select a language and click "OK" to proceed.



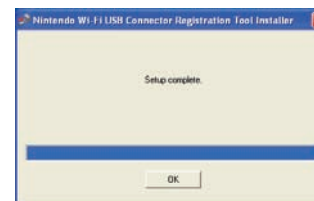
4

INSTALLATION INSTRUCTIONS

4. When directed to do so, insert the Nintendo USB Connector into the USB port on your PC. **NOTE:** When communicating with a Wii system, if you see an error window relating to a high speed USB device in a low speed USB connection, you will need to use another USB port (not a USB hub), or a port that uses USB 2.0. If communicating with a Nintendo DS, you may ignore this and proceed.



5. The necessary files will automatically be installed after the USB connector is plugged into the PC. **To complete the installation process, you must grant permission to your system. See page 6.**

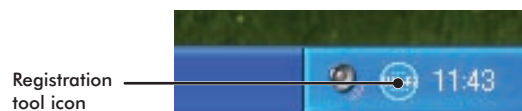


5

INSTALLATION INSTRUCTIONS

Granting Permission To Your Nintendo DS or Wii System

In the task bar at the bottom of the PC screen there will be an icon to start the Nintendo Wi-Fi USB Connector registration tool. This tool is used to set permission for individual systems to communicate with the USB connector.



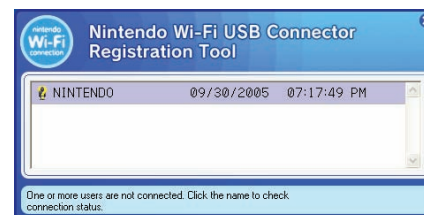
You will use this tool during Wi-Fi compatible game setup when you first configure your system to connect up to the USB connector.

1. Double-click on the Registration Tool icon in the Windows XP task bar, as shown above. The Registration Tool window will open (see illustration, page 7).
2. Insert a Nintendo WFC compatible game into your Nintendo DS or Wii and turn the power on. Go to the Nintendo Wi-Fi Connection Setup utility and in the **Nintendo Wi-Fi Connection Settings** screen, select **Connect to your Nintendo Wi-Fi USB Connector**.

6

INSTALLATION INSTRUCTIONS

3. The registration tool window will show a list of names of any systems that are attempting to connect to the USB connector. Click on the name of your system and select "Grant permission to connect."



After configuration, the Nintendo DS or Wii system will ask to run a connection test. Select "OK" to begin test. If the test is successful, your system is ready for online gameplay. See the instruction booklet for the game you are playing for more online gameplay information.

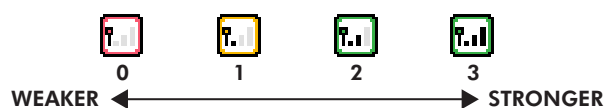
If the test is unsuccessful, you will be given an error code and instructions to help resolve setup problems.

7

WIRELESS COMMUNICATION GUIDELINES

After you have configured your Nintendo DS or Wii to communicate with the USB connector, observe the following wireless signal strength guidelines:

During wireless communication setup or gameplay, an icon will appear on the upper or lower Nintendo DS displays showing the signal strength of the wireless signal. The icon has four modes depending on the signal strength:



For optimal communication, keep the signal strength at 2 or 3 by moving closer to the USB connector if necessary.

Follow these guidelines to maintain a strong signal:

- Keep the maximum distance between systems and the USB connector at 30 feet (10 meters) or less.
- Reorienting the DS or Wii console to the USB connector may boost the signal.
- Avoid having people or other obstructions between the DS or Wii console and the USB connector.
- Avoid interference from other devices. If communication seems to be affected by other devices (wireless LAN, microwave ovens, cordless devices, computers), move to another location if possible or turn off the interfering device.

8

TROUBLESHOOTING

If you have trouble installing or operating this device, please check following before calling for service:

- After software installation, your Nintendo DS or Wii must be registered with the USB connector. Review pages 6-7, *Granting Permission To Your Nintendo DS or Wii System*, to make sure it is registered correctly.
- Verify that your internet connection is working properly.
- Your PC must be on and running the Windows XP operating system.
- You must be using a Nintendo DS game that includes the Nintendo Wi-Fi Connection feature.
- Check that the Nintendo Wi-Fi USB Connector and/or USB Cable connections are securely inserted into the USB port.
- No more than five Nintendo DS or Wii systems can communicate with the USB connector at one time.
- Some games may have a maximum number of players. Check to see if the maximum number of players has been exceeded.
- If you have changed your internet settings, you may have to reinstall the software for this USB Connector.

If this device still does not operate correctly after trying the above remedies, please visit our website at www.nintendowifi.com (USA, Canada, and Latin America) or call Nintendo's Customer Service at 1-800-895-1672 (USA and Canada only).

- **To uninstall the registration tool, click on "Start" in the Windows XP task bar and then select Nintendo Wi-Fi USB Connector Registration Tool in your program list. Select the "uninstall" option to remove the program.**

9

WARRANTY & SERVICE INFORMATION

Rev. P

You may need only simple instructions to correct a problem with your product. Try our website at www.nintendo.com or call our Consumer Assistance Hotline at 1-800-255-3700, rather than going to your retailer. Hours of operation are 6 a.m. to 7 p.m., Pacific Time, Monday - Sunday (times subject to change). If the problem cannot be solved with the troubleshooting information available online or over the telephone, you will be offered express factory service through Nintendo. Please do not send any products to Nintendo without contacting us first.

HARDWARE WARRANTY

Nintendo of America Inc. ("Nintendo") warrants to the original purchaser that the hardware product shall be free from defects in material and workmanship for twelve (12) months from the date of purchase. If a defect covered by this warranty occurs during this warranty period, Nintendo will repair or replace the defective hardware product or component, free of charge. The original purchaser is entitled to this warranty only if the date of purchase is registered at point of sale or the consumer can demonstrate, to Nintendo's satisfaction, that the product was purchased within the last 12 months.

GAME & ACCESSORY WARRANTY

Nintendo warrants to the original purchaser that the product (games and accessories) shall be free from defects in material and workmanship for a period of three (3) months from the date of purchase. If a defect covered by this warranty occurs during this three (3) month warranty period, Nintendo will repair or replace the defective product, free of charge.

SERVICE AFTER EXPIRATION OF WARRANTY

Please try our website at www.nintendo.com or call the Consumer Assistance Hotline at 1-800-255-3700 for troubleshooting information and repair or replacement options and pricing. In some instances, it may be necessary for you to ship the complete product, FREIGHT PREPAID AND INSURED FOR LOSS OR DAMAGE, to Nintendo. Please do not send any products to Nintendo without contacting us first.

10

WARRANTY AND SERVICE INFORMATION

WARRANTY LIMITATIONS

THIS WARRANTY SHALL NOT APPLY IF THIS PRODUCT: (a) IS USED WITH PRODUCTS NOT SOLD OR LICENSED BY NINTENDO (INCLUDING, BUT NOT LIMITED TO, NON-LICENSED GAME ENHANCEMENT AND COPIER DEVICES, ADAPTERS, AND POWER SUPPLIES); (b) IS USED FOR COMMERCIAL PURPOSES (INCLUDING RENTAL); (c) IS MODIFIED OR TAMPERED WITH; (d) IS DAMAGED BY NEGLIGENCE, ACCIDENT, UNREASONABLE USE, OR BY OTHER CAUSES UNRELATED TO DEFECTIVE MATERIALS OR WORKMANSHIP; OR (e) HAS HAD THE SERIAL NUMBER ALTERED, DEFACED OR REMOVED.

ANY APPLICABLE IMPLIED WARRANTIES, INCLUDING WARRANTIES OF MERCHANTABILITY AND FITNESS FOR A PARTICULAR PURPOSE, ARE HEREBY LIMITED IN DURATION TO THE WARRANTY PERIODS DESCRIBED ABOVE (12 MONTHS OR 3 MONTHS, AS APPLICABLE). IN NO EVENT SHALL NINTENDO BE LIABLE FOR CONSEQUENTIAL OR INCIDENTAL DAMAGES RESULTING FROM THE BREACH OF ANY IMPLIED OR EXPRESS WARRANTIES. SOME STATES DO NOT ALLOW LIMITATIONS ON HOW LONG AN IMPLIED WARRANTY LASTS OR EXCLUSION OF CONSEQUENTIAL OR INCIDENTAL DAMAGES, SO THE ABOVE LIMITATIONS MAY NOT APPLY TO YOU.

This warranty gives you specific legal rights. You may also have other rights which vary from state to state or province to province.

Nintendo's address is: Nintendo of America Inc., P.O. Box 957, Redmond, WA 98073-0957 U.S.A.

This warranty is only valid in the United States and Canada.

11

REGULATIONS FOR EQUIPMENT USE IN USA AND CANADA

FCC and Industry Canada Information

In order to comply with FCC radio-frequency radiation exposure guidelines for an uncontrolled exposure, this device and its antenna must not be co-located or operating in conjunction with any other antenna or transmitter.

This device complies with Part 15 of the FCC Rules and RSS-210 of Industry Canada. Operation is subject to the following two conditions: (1) This device may not cause harmful interference, and (2) this device must accept interference received, including interference that may cause undesired operation.

Changes or modifications not expressly approved by the manufacturer could void the user's authority to operate this device.

This equipment has been tested and found to comply with the limits of a Class B digital device, pursuant to part 15 of the FCC Rules. These limits are designed to provide reasonable protection against harmful interference in a residential installation. This equipment generates, uses and can radiate radio frequency energy and, if not installed and used in accordance with the instructions, may cause harmful interference to radio communications. However, there is no guarantee that interference will not occur in a particular installation. If this equipment does cause harmful interference to radio or television reception, which can be determined by turning the equipment off and on, the user is encouraged to try to correct the interference by one or more of the following measures:

- Reorient or relocate the receiving antenna.
- Increase the separation between the equipment and receiver.
- Connect the equipment into an outlet on a circuit different from that to which the receiver is connected.
- Consult the dealer or an experienced radio/TV technician or call Nintendo Consumer Service at 1-800-255-3700 for assistance.

The user may find the following booklet prepared by the Federal Communications Commission helpful: How to Identify and Resolve Radio-TV Interference Problems. This booklet is available from the U.S. Government Printing Office, Washington, D.C., 20402, Stock No. 004-000-00345-4.

The term IC before the certification/registration number only signifies that the Industry Canada technical specifications were met.

12

Nintendo® Wi-Fi USB Connector Mode d'Emploi

TABLE DES MATIÈRES

INTRODUCTION	15
CONSEILS DE PRÉCAUTIONS ET D'UTILISATION	16
COMPOSANTS	17
INSTRUCTIONS POUR L'INSTALLATION	18-21
DIRECTIVES CONCERNANT LA COMMUNICATION SANS FIL	22
DÉPANNAGE	23
INFORMATIONS SUR LA GARANTIE ET LES RÉPARATIONS	24-25
RÈGLEMENTS CONCERNANT L'UTILISATION DE L'ÉQUIPEMENT AUX É.-U. ET AU CANADA	26

Le Nintendo Wi-Fi USB Connector n'est pas compatible avec les concentrateurs de réseau USB, ou avec les cartes ou panneaux d'interface USB 1.0/2.0.

NOTE : Le Nintendo Wi-Fi USB Connector peut devenir chaud pendant une opération normale.

Exigences pour l'opération du Nintendo Wi-Fi USB Connector :

SE: Windows XP
Ordinateur Minimum: Intel Pentium (ou compatible) 800MHz
Mémoire Minimum : 256MB Espace de Disque Dur Minimum : 10MB

INTRODUCTION

Le Nintendo Wi-Fi USB Connector est un point d'accès sans fil spécialisé qui peut s'installer dans la prise USB d'un PC. **Votre PC doit opérer le système d'exploitation Windows XP pour que cet appareil fonctionne.**

À l'aide de cet USB Connector, jusqu'à cinq systèmes peuvent se connecter à Internet en même temps.

IMPORTANT: N'oubliez pas de charger le CD-ROM fourni dans votre PC et d'installer les pilotes AVANT d'insérer le Nintendo Wi-Fi USB Connector dans la prise USB de votre PC. (Voir page 18.)

Ce mode d'emploi vous indiquera comment installer et configurer le Nintendo Wi-Fi USB Connector sur votre PC. Afin d'effectuer cette configuration et de jouer à vos jeux de DS ou de Wii sur Internet, il vous faudra les appareils suivants en plus de l'USB Connector:

1. Un système de jeux vidéos portatif Nintendo DS ou Wii.
2. Un jeu de Nintendo DS ou de Wii qui offre la fonction Nintendo Wi-Fi Connection. Recherchez l'icône suivante sur l'emballage des jeux de DS ou de Wii pour savoir quels jeux offrent cette fonction.
3. Un PC opérant le système d'exploitation Windows XP et doté d'un service Internet à haute vitesse ou DSL actif.

NOTE : Votre PC doit être allumé quand vous jouez aux jeux utilisant l'USB Connector.



15