

# Ultimate NES Remix

1 Important Information

## Getting Started

2 Internet Enhancements

3 Note to Parents and Guardians

## How to Play

4 Selecting a Mode

5 Selecting a Stage

6 Playing Stages

7 Rankings


8 Saving and Deleting Data

## Troubleshooting

9 Support Information

**1****Important Information**

Please read this manual carefully before using the software. If the software will be used by children, the manual should be read and explained to them by an adult.

Also, before using this software, please select  in the HOME Menu and carefully review content in "Health and Safety Information." It contains important information that will help you enjoy this software.

You should also thoroughly read your Operations Manual, including the "Health and Safety Information" section, before using this software.

Please note that except where otherwise stated, "Nintendo 3DS™" refers to all devices in the Nintendo 3DS family, including the Nintendo 3DS, Nintendo 3DS XL, and Nintendo 2DS™.

## Important Information

Your Nintendo 3DS system and this software are not designed for use with any unauthorized device or unlicensed accessory. Such use may be illegal, voids any warranty, and is a breach of your obligations under the User Agreement. Further, such use may lead to injury to yourself or others and may cause performance issues and/or damage to your Nintendo 3DS system and related services. Nintendo (as well as any Nintendo licensee or distributor) is not responsible for any damage or loss caused by the use of such device or unlicensed accessory. Except as authorized, copying of any Nintendo software is illegal and is strictly prohibited by domestic and international intellectual property laws. "Back-up" or "archival" copies are not authorized.

Nintendo respects the intellectual property of others, and we ask Nintendo 3DS software Content Providers to do the same. In accordance with the Digital Millennium Copyright Act in the US, the Electronic Commerce Directive in the EU, and other applicable law, we have adopted a policy of removing, in appropriate circumstances and at our sole discretion, any Nintendo 3DS software that appears to infringe anyone else's intellectual property. If you believe your intellectual property rights are being infringed, please visit [www.nintendo.com/ippolicy](http://www.nintendo.com/ippolicy) to view the full policy and understand your rights.

© 2013-2014 Nintendo

Trademarks are property of their respective owners. Nintendo 3DS is a trademark of Nintendo.

CTR-P-BFRE-00

Connecting your system to the Internet allows you to enjoy the following features:

- Purchasing software in Nintendo eShop (page 5).
- Participating in online rankings (page 7).
- ◆ Refer to your Operations Manual for information about connecting your system to the Internet.

This software supports Nintendo Network.



Nintendo Network is the name of Nintendo's network service that enables users to enjoy games and other content via the Internet.

### Protecting Your Privacy

- To protect your privacy, do not give out personal information, such as last name, phone number, birth date, age, school, e-mail, or home address when communicating with others.
- Friend codes are a part of a system that allows you to play with people you know. If you exchange friend codes with strangers, there is a risk you could share information with

people you do not know or exchange messages that contain offensive language. We therefore recommend that you do not give your friend codes to people you don't know.

You can restrict use of the following features by adjusting the options in Parental Controls.

- ◆ Access to this game (as well as other games) can also be restricted through the **Software Rating** option in Parental Controls.
- ◆ Refer to your Operations Manual for information on how to set up Parental Controls.
- **Nintendo 3DS Shopping Services**  
Restricts the purchasing of other software from within this software.
- **Online Interaction**  
Restricts the ability to access online rankings.




## Start

Select this to jump to the stage-selection screen (page 5).



## Speed Mario Bros.

Play a special version of the Super Mario Bros.™ game where Mario™, the enemies, and everything else have been sped up! Select Speed Mario Bros. with **(A)** or the Touch Screen, select Game Start, and then press  to begin.



## Championship Mode

Compete in this mode inspired by the Nintendo World Championships, made up of stages from three different titles.

- ◆ Please note that the rankings displayed for this mode are different from the rankings that appear in NES Remix 2 on the Wii U™ console.





## 5 Selecting a Stage



### Stage-Selection Screen

Choose what to tackle by scrolling through all available games and stages.



**1** Total stars

**2** New-stage icon

This appears when a new stage or game has been unlocked.

**3** Number of stars earned in selected game

**4** Number of stars earned on the selected stage

**5** Today's challenge stage

Today's recommended stage, where you pit yourself against other players via the rankings. Changes daily.

**6** Rankings button

**7** Nintendo eShop button

This button will take you to Nintendo eShop. Once there, you can purchase Virtual Console editions of the titles within this game as well as 3D Classics versions of several of the games. 3D Classics versions have new 3D graphics.

## Stage-Selection-Screen Controls



Switch between games



Switch between stages



Select



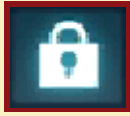
Back



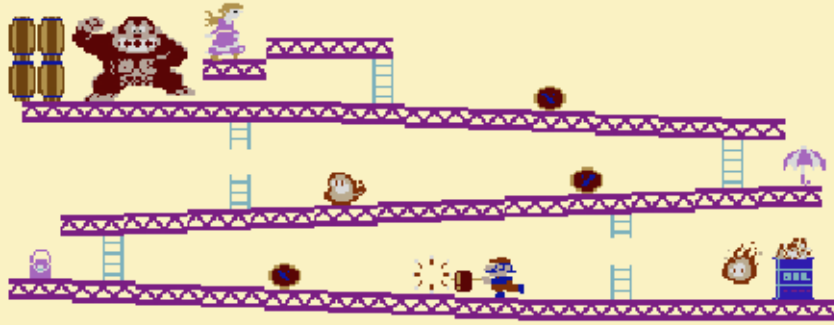
## Types of Stages



Stages with this symbol require you to play the previous stage.



Stages with this symbol are unlocked by collecting stars and become available in order from top to bottom. Select the next unavailable stage to see how many stars you need to unlock it.



## 6

## Playing Stages



Take on stages from classic NES™ games that have been reworked with exciting new rules and objectives. More stages will become available as you progress.



**1** Time remaining

**2** Current challenge

**3** Life remaining

**4** Number of challenges

## Pause Menu



Press  to open the Pause menu.

Continue	Return to the game.
Restart	Begin the current stage from the beginning of the first challenge.
End	Return to the stage-selection screen.



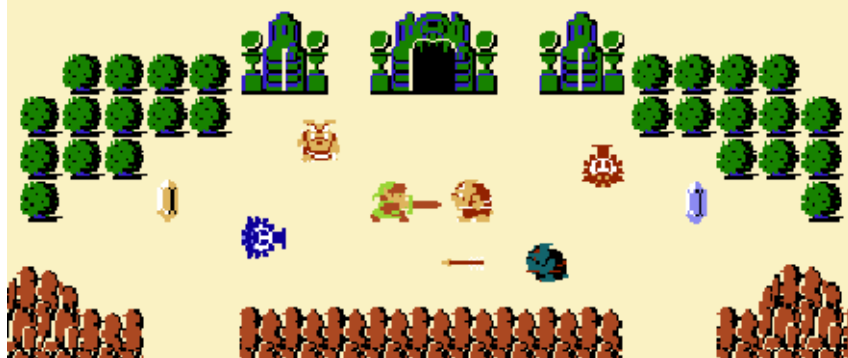
## Clearing a Stage

You'll earn stars according to your clear time. Earning stars will unlock Remix stages and new titles.




## Game Over


It's game over when you run out of time or life.





## Rankings (Requires Internet Connection)

Tap the  on the stage-selection screen to view rankings for that stage. You can view the rankings of your friends or the rankings for your region. Please note, if you have selected to make your own data public, the name of your Mii character, the user name of the system, and your clear times will be automatically uploaded and visible online.

Tap  on the Rankings screen to watch the selected gameplay footage.

- ◆ Because of size limitations, longer videos may end earlier than intended.
- ◆ Please note that only friends from your region will be listed in the Friend Rankings.
- ◆ If you use a system other than the one you first used to upload your ranking data, or if you format the system memory of your system, you will not be recognized as the creator of your previous data and you will be unable to add new data to your previous records.







## Save Data

The game will save automatically each time you finish playing a stage.

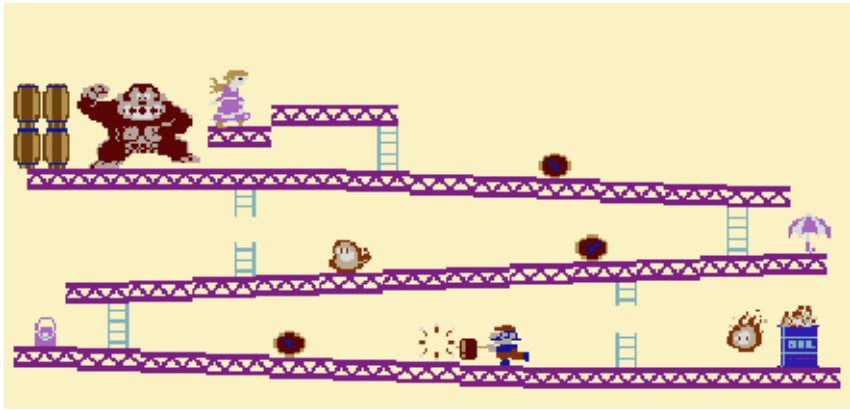


## Deleting Data

First, launch the software. After the Nintendo 3DS logo disappears but before the title screen is displayed, hold (A) + (B) + (X) + (Y) at the same time to delete all of your save data.

- ◆ Please carefully read the prompts when deleting save data. Deleted save data cannot be recovered.

Data can be lost due to user action, such as repeatedly powering off and on the system or removing a Game Card or SD Card while saving. Data loss may also be caused by poor connectivity due to dirt or dust in the system's ports. Please be aware that in these cases data cannot be restored.



9

## Support Information

Nintendo Customer Service  
[SUPPORT.NINTENDO.COM](https://support.nintendo.com)

USA/Canada:  
1-800-255-3700

Latin America/Caribbean:  
(001) 425-558-7078