



# Wii Operations Manual

## Channels and Settings

To protect your health and safety, and for correct use of the Wii system, please read and follow the instructions in the Wii Operations Manual - System Setup.

This product contains browser technology ("Opera Browser") licensed from Opera Software ASA (www.opera.com). (Opera® Browser from Opera Software ASA. Copyright 1995-2008 Opera Software ASA. All rights reserved.) The Opera Browser includes the Zlib compression library, developed by Jean-loup Gailly and Mark Adler. Copyright © 1995-2004 Jean-loup Gailly and Mark Adler.

The Opera Browser includes software developed by the OpenSSL Project for use in the OpenSSL Toolkit. Copyright © 1998-2001 The OpenSSL Project. All rights reserved.

Redistribution and use in source and binary forms, with or without modification, are permitted provided that the following conditions are met:

- 1. Redistributions of source code must retain the above copyright notice, this list of conditions and the following disclaimer.
- 2. Redistributions in binary form must reproduce the above copyright notice, this list of conditions and the following disclaimer in the documentation and/or other materials provided with the distribution.
- 3. All advertising materials mentioning features or use of this software must display the following acknowledgment: "This product includes software developed by the OpenSSL Project for use in the OpenSSL Toolkit. (http://www.openssl.org/)"
- 4. The names "OpenSSL Toolkit" and "OpenSSL Project" must not be used to endorse or promote products derived from this software without prior written permission. For written permission, please contact openssl-core@openssl.org.
- 5. Products derived from this software may not be called "OpenSSL" nor may "OpenSSL" appear in their names without prior written permission of the OpenSSL Project.
- 6. Redistributions of any form whatsoever must retain the following acknowledgment: "This product includes software developed by the OpenSSL Project for use in the OpenSSL Toolkit (http://www.openssl.org/)"

THIS SOFTWARE IS PROVIDED BY THE OPENSOURCE PROJECT "AS IS" AND ANY EXPRESSED OR IMPLIED WARRANTIES, INCLUDING, BUT NOT LIMITED TO, THE IMPLIED WARRANTIES OF MERCHANTABILITY AND FITNESS FOR A PARTICULAR PURPOSE ARE DISCLAIMED. IN NO EVENT SHALL THE OPENSOURCE PROJECT OR ITS CONTRIBUTORS BE LIABLE FOR ANY DIRECT, INDIRECT, INCIDENTAL, SPECIAL, EXEMPLARY, OR CONSEQUENTIAL DAMAGES (INCLUDING, BUT NOT LIMITED TO, PROCUREMENT OF SUBSTITUTE GOODS OR SERVICES; LOSS OF USE, DATA, OR PROFITS; OR BUSINESS INTERRUPTION) HOWEVER CAUSED AND ON ANY THEORY OF LIABILITY, WHETHER IN CONTRACT, STRICT LIABILITY, OR TORT (INCLUDING NEGLIGENCE OR OTHERWISE) ARISING IN ANY WAY OUT OF THE USE OF THIS SOFTWARE, EVEN IF ADVISED OF THE POSSIBILITY OF SUCH DAMAGE.

The Opera Browser contains cryptographic software written by Eric Young. Copyright © 1995-1998 Eric Young (eay@cryptsoft.com). All rights reserved.

This package is an SSL implementation written by Eric Young (eay@cryptsoft.com). The implementation was written so as to conform with Netscape's SSL. This library is free for commercial and non-commercial use as long as the following conditions are aheared to. The following conditions apply to all code found in this distribution, be it the RC4, RSA, lhash, DES, etc., code; not just the SSL code. The SSL documentation included with this distribution is covered by the same copyright terms except that the holder is Tim Hudson (tjh@cryptsoft.com).

Copyright remains Eric Young's, and as such any Copyright notices in the code are not to be removed. If this package is used in a product, Eric Young should be given attribution as the author of the parts of the library used. This can be in the form of a textual message at program startup or in documentation (online or textual) provided with the package.

Redistribution and use in source and binary forms, with or without modification, are permitted provided that the following conditions are met:

- 1. Redistributions of source code must retain the copyright notice, this list of conditions and the following disclaimer.
- 2. Redistributions in binary form must reproduce the above copyright notice, this list of conditions and the following disclaimer in the documentation and/or other materials provided with the distribution.
- 3. All advertising materials mentioning features or use of this software must display the following acknowledgement: "This product includes cryptographic software written by Eric Young (eay@cryptsoft.com)" The word 'cryptographic' can be left out if the routines from the library being used are not cryptographic related :-).
- 4. If you include any Windows specific code (or a derivative thereof) from the apps directory (application code) you must include an acknowledgement: "This product includes software written by Tim Hudson (tjh@cryptsoft.com)"

THIS SOFTWARE IS PROVIDED BY ERIC YOUNG "AS IS" AND ANY EXPRESS OR IMPLIED WARRANTIES, INCLUDING, BUT NOT LIMITED TO, THE IMPLIED WARRANTIES OF MERCHANTABILITY AND FITNESS FOR A PARTICULAR PURPOSE ARE DISCLAIMED. IN NO EVENT SHALL THE AUTHOR OR CONTRIBUTORS BE LIABLE FOR ANY DIRECT, INDIRECT, INCIDENTAL, SPECIAL, EXEMPLARY, OR CONSEQUENTIAL DAMAGES (INCLUDING, BUT NOT LIMITED TO, PROCUREMENT OF SUBSTITUTE GOODS OR SERVICES; LOSS OF USE, DATA, OR PROFITS; OR BUSINESS INTERRUPTION) HOWEVER CAUSED AND ON ANY THEORY OF LIABILITY, WHETHER IN CONTRACT, STRICT LIABILITY, OR TORT (INCLUDING NEGLIGENCE OR OTHERWISE) ARISING IN ANY WAY OUT OF THE USE OF THIS SOFTWARE, EVEN IF ADVISED OF THE POSSIBILITY OF SUCH DAMAGE.

The licence and distribution terms for any publically available version or derivative of this code cannot be changed. i.e. this code cannot simply be copied and put under another distribution licence (including the GNU Public Licence.)

Number-to-string and string-to-number conversions are covered by the following notice: The author of this software is David M. Gay. Copyright © 1991, 2000, 2001 by Lucent Technologies.

Permission to use, copy, modify, and distribute this software for any purpose without fee is hereby granted, provided that this entire notice is included in all copies of any software which is or includes a copy or modification of this software and in all copies of the support-ing documentation for such software.

THIS SOFTWARE IS BEING PROVIDED "AS IS", WITHOUT ANY EXPRESS OR IMPLIED WARRANTY. IN PARTICULAR, NEITHER THE AUTHOR NOR LUCENT MAKES ANY REPRESENTATION OR WARRANTY OF ANY KIND CONCERNING THE MERCHANTABILITY OF THIS SOFTWARE OR ITS FITNESS FOR ANY PARTICULAR PURPOSE.

Portions of this software are copyright © 2006 The FreeType Project (www.freetype.org). All rights reserved.

The Nuance logo is a trademark of Nuance Communications, Inc.

"A O S S"™ and AOSS™ are the trademarks of BUFFALO INC.

Windows and Windows Vista are trademarks of the Microsoft group of companies.

Dolby, Pro Logic, and the double-D symbol are trademarks of Dolby Laboratories.

This product contains PrFILE\*2 FAT file system, PrMAIL mail client library, and PrUSB/Host USB host stack of eSOL Co.,Ltd. Copyright © 2006 eSOL Co., Ltd. PrFILE\*2 is a registered trademark of eSOL Co., Ltd. in Japan. PrMAIL and PrUSB/Host are trademarks of eSOL Co., Ltd. in Japan.

The Wii console includes RSA BSAFE Cryptographic software from RSA Security Inc. RSA is a registered trademark of RSA Security Inc. BSAFE is a registered trademark of RSA Security Inc. in the United States and/or other countries. © 2005 RSA Security Inc. All Rights Reserved.

Wii uses certain fonts provided by Fontworks Inc.

Although an IBM logo appears on the Wii packaging, IBM is not responsible for warranty support of the Wii system.

SDHC Logo is a trademark of SD-3C, LLC.

TM, ® and the Wii logo are trademarks of Nintendo. © 2011 Nintendo. All Rights Reserved. Nintendo of Canada Ltd., Authorized User in Canada. Elements of the Wii console and the Wii Network Services are patent pending, both in the United States and internationally.

Français – Page 79  
Español – Página 159

Wii Menu	2 – 3
Channels	
Disc Channel	4 – 5
Mii™ Channel	6 – 13
Photo Channel	14 – 23
Wii Shop Channel	24 – 25
Virtual Console™	26 – 27
WiiWare™	28 – 29
Wii Message Board	30 – 39
Wii Settings and Data Management	40 – 63
HOME Menu	64 – 65
SD Card Menu	66 – 69
Wii Keyboard	70 – 71
USB Keyboard	72
Troubleshooting	72 – 77



## Using the Wii Menu

When the Wii console power is turned on, the first screen you will see is the Wii Menu. From this screen, you can do several activities:

- Play a Game Disc
- Use one of the built-in software programs (Channels) included with the Wii console
- Change Wii console settings
- Access the SD Card Menu screen  
(To use this menu item, an SD Card [sold separately] must be inserted into the SD Card slot. The icon will appear gray if there is no SD Card inserted.)
- Interact with the Wii Message Board

To select any of these activities, simply point at one with the Wii Remote™ Plus and press the A Button.

### Wii Channels

Play a Wii Game Disc, start one of the built-in software programs included with the Wii console, or start other software programs downloaded to your console from the Wii Shop Channel. You can also select the Wii + Internet icon to view the Get Connected video about connecting your Wii system to the Internet.

The Wii Menu can have up to 48 Channels at one time. If you have more Channels than can be shown on the screen at one time, these can be accessed by selecting the blue scroll arrows.



**Wii Settings and Data Management**  
Change console settings or organize the contents of an SD Card (see page 40).

**SD Card Menu**  
Open the SD Card Menu (see page 66).

**Current Date**  
**Wii Message Board**  
Open the Wii Message Board (see page 30).  
• Blinks when you have received a message.

## Wii Channels

These are the current Channels available:

- **Disc Channel**  
Play Wii games.
- **Mii Channel**  
Create characters that can be used in Mii-compatible software programs.
- **Photo Channel**  
View digital photos and videos from SD Cards.
- **Wii Shop Channel** (Broadband Internet connection required.)  
Download new Channels, or use Wii Points™ to download Virtual Console supported games and other Wii programs such as WiiWare titles, or purchase goods (when available) offered on the Wii Shop Channel.
- **Forecast Channel** (Broadband Internet connection required.)  
Check the weather conditions in different locations.
- **News Channel** (Broadband Internet connection required.)  
View news from around the world.
- **Shortcut Channels** (Broadband Internet connection required.)  
Some channels are not installed on the Wii system, but can be downloaded for free from the Wii Shop Channel. Select a channel icon from the Wii Menu to find out more information about the Channel and to connect to the Wii Shop Channel to download it.  
**NOTE:** Formatting your Wii System Memory (see page 63) will permanently delete Shortcut Channels from your system. However, these Channels can be downloaded again free from the Wii Shop Channel.

## Get Connected Video

Select the **Wii + Internet** icon from the Wii Menu to watch a video showing the many advantages of connecting your Wii system to the Internet.

Once you have connected your Wii system to the Internet, if you select this icon again, you will be asked if you would like to keep the video or delete it. Deleting the video will free up Wii system memory.

**If this program is deleted, it cannot be recovered. It will also be permanently deleted if you format the Wii system memory (see page 63).**

## WiiConnect24™

The Wii console can communicate with the Internet even when the power is turned off. The WiiConnect24 service can deliver game updates or other information even if the system is idle. (Broadband Internet connection required.)

See page 62 for more information on WiiConnect24.

## Disc Channel



## Playing a Wii Game Disc

### ■ Before Inserting a Game Disc

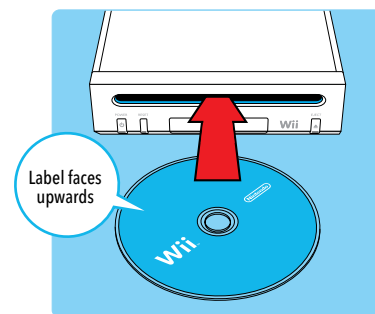
- Make sure that your TV and any audio equipment that is connected to your Wii console is turned on.
- Choose the correct input setting for your TV (see page 18 in the Wii Operations Manual - System Setup).

#### **IMPORTANT: To avoid damage to your Wii console or game discs:**

- Do not insert anything into the Game Disc slot except Wii Game Discs.
- Do not move the Wii console during use.

### ■ Inserting a Game Disc

Insert your Game Disc into the Disc Slot on the front of the Wii console. The console will turn on automatically and the Wii Menu will appear (the disc label will face upwards).



### ■ Starting the Game

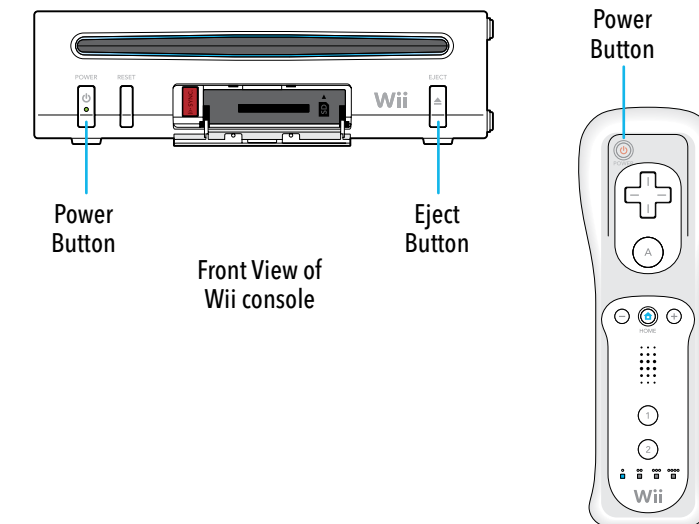
1. Using the Wii Remote Plus, select the Disc Channel on the Wii Menu.
  2. Select Start on the game's Channel Preview screen to begin the game.
- Review the instruction booklet for the game you are playing for specific game control information.



Channel Preview screen

### ■ When You're Done Playing

1. Press the Eject Button to remove the Game Disc if you are finished playing the game.
2. Turn the power off by pressing the Power Button on the front of the console, or by pressing the Power Button on the Wii Remote Plus for one second.





Put yourself into your Wii console by making a Mii™... or many Mii characters! You can see Mii characters in your games, carry them in your Wii Remote Plus, and let them hang out with friends' Mii characters, whether they're across the street or around the world!

Mii Channel  
Wii Menu

To select an on-screen option, simply point at it with the Wii Remote Plus and press the A Button.

## Making Your First Mii

### ■ Selecting the Mii Channel from the Wii Menu

Use the Wii Remote Plus to select the Mii Channel, then select START to begin creating your first Mii. (This Channel is controlled by one remote at a time.)

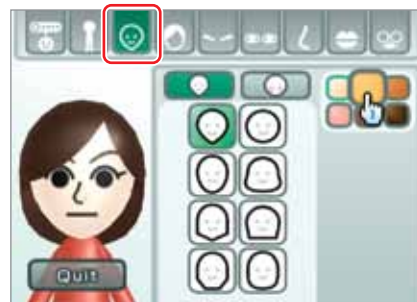
### ■ Creating Your Mii

First select Male or Female. You'll then see a starter face that you can change, along with a style menu. Go through the following steps to make your Mii.

Select a gender.



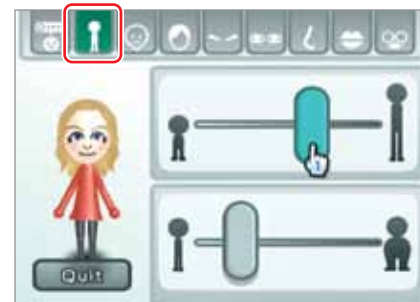
Change your Mii characters' face shape, hair color, and skin tone.



Fine-tune your Mii characters' face. Change its eyes, brows, nose, and mouth, and even add glasses and accessories.



Finally, tailor your Mii characters' proportions however you like.



You've designed your first Mii! After you give it a few personal profile details like a Nickname (see page 10), you're completely finished!



Design an endless variety of Mii characters!



### ■ What Are Mii characters For?

- You can choose one of your Mii characters to be "you" in Mii-compatible games.
- You can store up to 100 Mii characters in your Mii Plaza (see page 11).
- You can carry Mii characters in your Wii Remote Plus to exchange them with Mii characters in friends' Wii consoles (see page 12). Yours will then appear in their games. And vice versa!
- You can also exchange Mii characters with friends around the world via WiiConnect24™ and the Mii Parade (see page 13).



## Creating More Mii characters

### ■ Selecting the Mii Channel from the Wii Menu

Use the Wii Remote Plus to select the Mii Channel, then select Start to enter Mii Plaza (see page 11).

Select the New Mii icon on the left side of the screen:

Select Male or Female. Then if you've created a Mii previously, you'll see two Mii start-up options: "Start from scratch" or "Choose a look-alike."

Mii Channel



### ■ Starting from Scratch

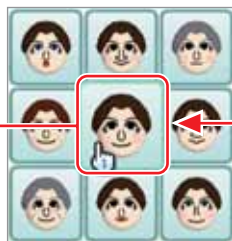
If you select "Start from scratch," you'll instantly be given a basic starter face, then you'll fine-tune all of its features, just as you did with your first Mii.

### ■ Choosing a Look-alike

Select "Choose a look-alike" if you want to get a Mii designed very quickly. You'll be shown a wide variety of starter faces that show a spectrum of Mii looks.

When you find a face you like, select "Use this face" to move onto the Feature Edit screen, where you can fine-tune the face if you prefer.

If you find one that's close but not quite right, select it and you'll see many variations on the face. You can use this method repeatedly to get closer and closer to the exact face that you want (as shown to the right). Select "Use this face" when you see the exact Mii face you want.



## Modifying a Mii

### ■ Changing Mii Features

Use the style menu when changing your Mii characters' face and body. As you select categories from the top Feature menu, you'll see the Feature style menu below fill with variations that you can choose for your Mii characters' look.

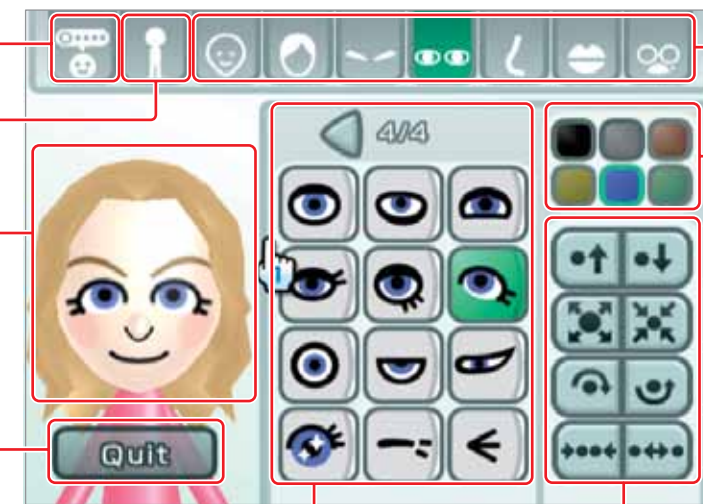
#### Feature Edit screen

Edit Mii profile  
See page 10.

Change body type  
See page 10.

Spin your Mii  
Select your Mii to see it whirl around and show you what it looks like from all sides.

Stop modifying  
When you quit styling your Mii, you can choose whether to save your changes, and then you'll go to the Mii Plaza, where you'll see your Mii walking around (see page 11).



Change facial features  
Select feature type to see variations appear below.

Change color  
You can select a color for many features.

Move feature up or down

Make feature larger or smaller  
Rotate feature

Change feature spacing  
You can tighten and broaden the spaces between dual features such as eyes and brows.

Feature style menu  
Scroll buttons will appear if there are more options available:

Feature adjustment menu



Right/Left Part  
This option will appear when modifying the hairstyle.

## ■ Changing Mii Features (continued)



Select the Body Type choice from the Feature Edit screen.

You can then adjust the height and weight of your Mii using two sliders.



"Grab" a slider and move the Wii Remote Plus to change the setting.

## ■ Creating a Profile For Your Mii



Select the Edit Mii Profile choice from the Feature Edit screen.

You can then give your Mii personal details. Select a detail you want to edit, then enter the information.



Profile settings

- Selecting some of the options will bring up a virtual keyboard to enter letters or numbers (see page 70 for information on using the keyboard).
- Make the Mii one of your Favorites if you want to give this Mii preference for showing up in Mii-compatible games.
- Turn a Mii characters' Mingle setting on if you want it to appear in the Mii Parade found on other Wii consoles (see page 13). Turn the Mii's Mingle off if you want to restrict it to your own home Wii console only.

## Seeing Your Mii characters in Mii Plaza

Mii characters that you create walk around in Mii Plaza. You can go to Mii Plaza to check out your Mii characters, edit and create Mii characters, prepare Mii characters for going to other Wii consoles, and do other useful things with your home Mii crowd. Up to 100 Mii characters can stay in Mii Plaza, and they'll all appear in any Mii-compatible games you play on your Wii console.

Return to Wii Menu

Edit a Mii

Drag and release a Mii over this icon to send it to Feature Edit. (You can't edit Mii characters from other Wii users.)

Create a new Mii

Erase a Mii

Drag and release a Mii over this icon to delete it.



Consult Help

Get information on Mii Channel controls.

Go to Mii Parade

Drag and release a Mii over this icon to send it to the Mii Parade. See page 13.

- Once moved to the Mii Parade, a Mii characters' birthday and creator information will be deleted.
- If a different game uses a Mii from the Mii Parade, that Mii will be removed from the current game and that game's save data may be affected.

Store a Mii in a Wii Remote Plus

See page 12.

Send a Mii to a Wii Friend

(requires an Internet connection)

Arrange your Mii characters

See page 12.

- Hold down the B Button and move the cursor to move the screen view.
- Press the + or - Buttons to zoom in and out on the screen.

- Select a Mii to display your Mii characters' label and change its Favorite status:



- Grab and move a Mii by selecting it with the Wii Remote Plus and holding down the A and B Buttons. You can then drop it into menu options by dragging it onto the corresponding icon, then releasing the buttons.



**NOTE: A Mii that is dragged onto the Erase icon can't be recovered.**

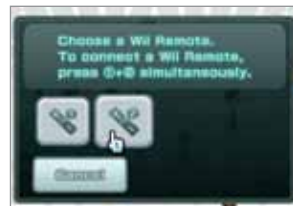
## ■ Storing a Mii in Your Wii Remote Plus



Select the Wii Remote icon from the Mii Plaza.

If you store a Mii on your Wii Remote Plus, you can take it to a friend's house and give a copy of your Mii to another Wii console. Your Mii can then be used in your friend's Mii-compatible games or put in your friend's Mii Parade. (You can also use your Wii Remote Plus to grab Mii characters from your friend's Wii system and later add it to your Mii Parade or your Mii-compatible game.)

### Choose a Wii Remote Plus



If more than one Wii Remote or Wii Remote Plus is in use with the console, you can choose which remote to save the Mii to.

### Move a Mii to a Wii Remote Plus



Each Wii Remote or Wii Remote Plus can hold up to ten Mii characters. To copy a Mii to the remote, grab and drag the Mii to an open spot. Select Save & Quit when you're finished.

## ■ Arranging Mii characters in the Mii Plaza



Select the Organize icon from the Portrait Plaza screen.

This will bring up new icons that let you organize your Mii characters by different categories:



Lists the number of Mii characters in the Mii Plaza.



Causes the Mii characters to scatter.



Arrange the Mii characters alphabetically.



Arrange by Favorite status.



Arrange by Favorite Color.



Arrange by gender.

## Checking Out Visitors in Mii Parade



Any of your friends' Mii characters that are set to Mingle will enter your Wii system first via the Mii Parade. You can see if any have arrived by selecting the Mii Parade icon in the Mii Plaza. (You can also bring Mii characters in to the Mii Parade from the Mii Plaza, as described on page 11.)

Each incoming Mii will stay in the Mii Parade until you transfer it to your Mii Plaza, where only then will it start showing up in your Mii-compatible games. Likewise, friends will first see any Mingle-approved Mii characters in their own Mii Parades and must transfer them to their Mii Plaza to see them appear in their own games.

### Send Mii to Mii Plaza

Grab and drop a Mii on this icon to move it from the Mii Parade to the Mii Plaza, which allows it to appear in your Mii-compatible games and lets you perform most Mii Plaza functions on it. (You can't edit your friends' Mii characters.)

### Erase a Mii



### Go to Mii Plaza

### Change Mingle Setting

Your Mii Parade will accept incoming Mii characters only if you turn on this Mingle option (see About Mingling below).

### Mii Speed

Select to adjust the speed at which the Mii characters move.

### Mii Number

Lists the number of Mii characters on the screen and the total number of Mii characters.

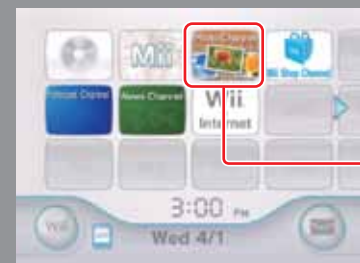
## About Mingling

Your Mii characters will enter friends' Mii Parades only if your Mii characters' individual Mingle settings are turned on. There are then two ways to send those Mii characters to their consoles. You can transfer Mii characters via your Wii Remote Plus (see page 12), or you can let them travel on their own via WiiConnect24 (see page 62).

NOTE: Mii characters will travel to other Wii consoles via WiiConnect24 only if you've registered your friends in your Wii address book (requires an Internet connection), and if you and your friends have Mingle options turned on.



# Photo Channel



On the Photo Channel, you can view and play with any photos and videos you've saved onto an SD or SDHC Card.

Photo Channel

Wii Menu

To select an on-screen option, simply point at it with the Wii Remote Plus and press the A Button.

## Using the Photo Channel

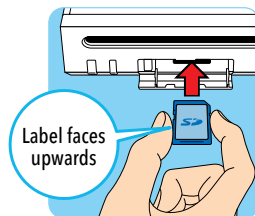
You can do any of the following things using the Photo Channel:

- View your photos as a slide show.
- Draw on your photos.
- Save your photos to the Wii System Memory in the console using the Wii Message Board (see page 30).
- Send your pictures to anyone on your list of Wii Friends.

### Inserting an SD or SDHC Card

Insert an SD Card into the SD Card Slot on the front of the console (32 GB maximum size).

NOTE: You can also use miniSD Cards and microSD Cards if you have an SD Card adapter, which can be found at most retail stores that sell SD Cards. See page 22 for more information on SD Cards.



### Selecting Your Photo Source

1. Using the Wii Remote Plus, select the Photo Channel on the Wii Menu. (More than one remote can be used with the Photo Channel at one time.)
2. Select either Digital Camera/Cell Phone or View Wii Message Board photos to view your photo album.

NOTE: Photos will appear on the Wii Message Board (see pages 32 and 36) only if you have posted them there in a previous Photo Channel session.

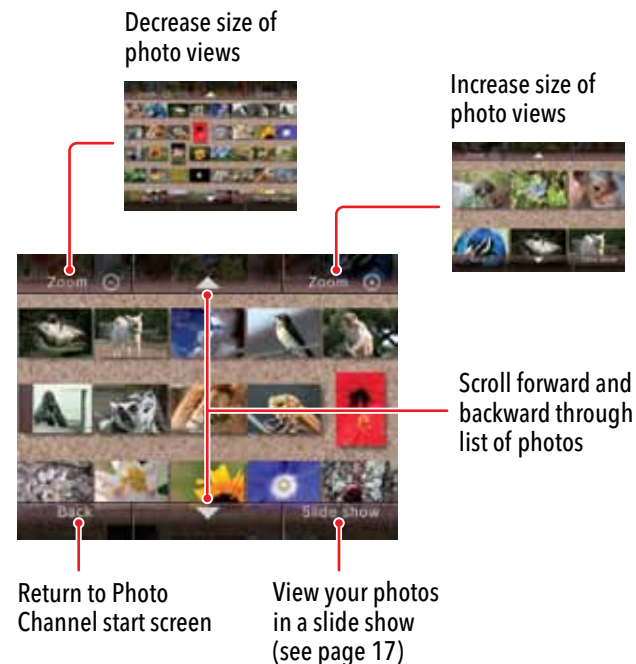


View photos from the Wii Message Board

View photos from an SD Card

### Viewing Your Photos and Videos

This on-screen menu will disappear temporarily if you move the cursor off the screen or stop moving the cursor for a moment.



- Your photos will appear on the TV screen in the order they were taken. If this data is not available with the photo, the date that you update the photo in the Photo Channel will be used.
- Videos will appear as the first frame from the file, with a film icon in one corner.
- If the photo or video is in a format that is not supported by the Photo Channel, it will appear as a question mark icon. See page 23 for supported formats.
- If you have a large number of photos, or if they are very large in size, it may take a moment to open them all.
- The Photo Channel can display a maximum of approximately 1,000 photos. If your SD Card has more than 1,000 photos, remove the card from the Wii console and remove or reorganize your photos in your camera, cell phone, or computer.

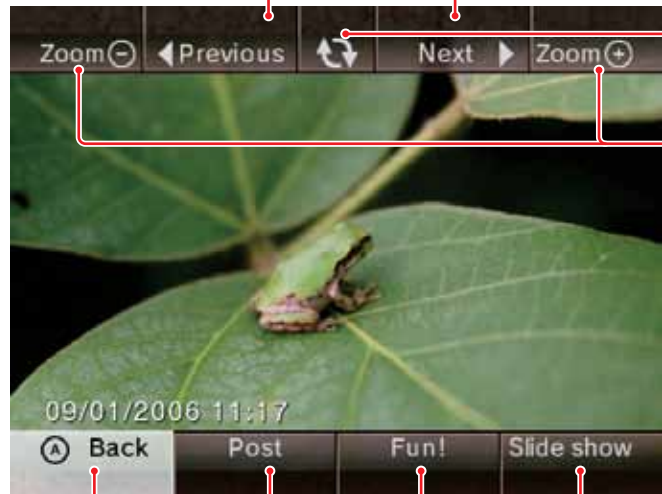


# Photo Channel

## ■ Viewing a Photo Full Screen

Use the Wii Remote Plus to select the photo you would like to view full screen.  
A new on-screen menu will appear with additional choices.

Scroll forward and backward  
through list of photos



Rotate photo 90° clockwise

Zoom in or out

If part of the photo is off-screen, a scroll panel will appear:  
Move the cursor over an arrow and press the A Button to change the area of the photo that is viewed.



Scroll left

Scroll up

Scroll right

Scroll down

Return to list  
of photos

Post photo to  
Message Board  
See page 21.

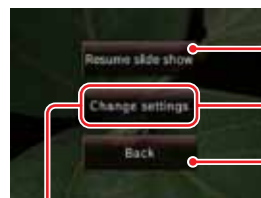
Play with  
your photos  
See page 18.

View a slide show  
of your photos  
See page 17.

## ■ Viewing Photos in a Slide Show

Select the slide show option using the Wii Remote Plus. The photos will  
automatically be displayed in the order they appear on the screen.

Press the A Button during a slide show to open an on-screen menu with  
additional choices.



Resume slide show

Adjust settings

End slide show

Resume slide show

Choose display order

Choose your photos randomly or in the order in which they were taken.

Change transition effects between photos

Change music played during slide show

Select from the songs included in the Photo Channel, or use any AAC format  
music saved on your SD Card.



Song Menu screen

# Photo Channel

## ■ Having Fun With Your Photos

Select the Fun! option to open a new menu with additional options for playing with your photos or frames from your videos.



Adjust the overall appearance of your photo

Draw, cut and paste, and add text and stamps

Create a puzzle out of a photo for others to reassemble

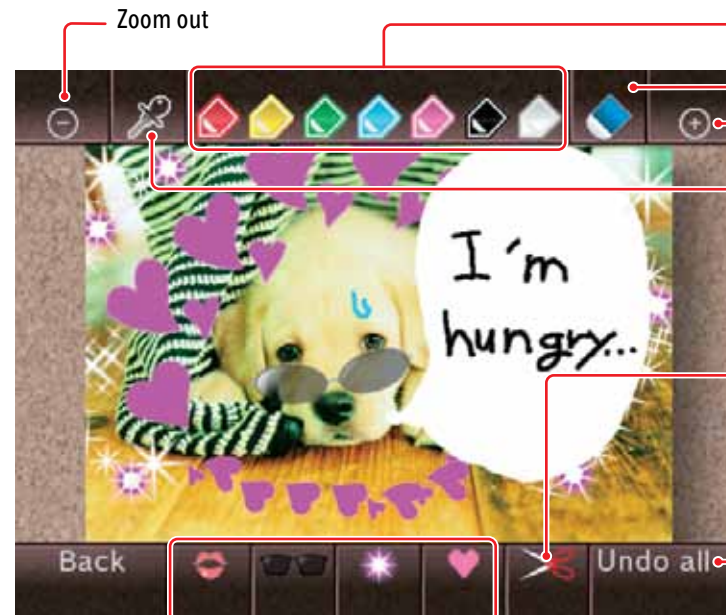
## Mood



### Mood Menu Screen Options

- Brighten: Brighten the photo. Select repeatedly to increase effect.
- Black and White: Convert photo to gray scale monochrome.
- Zap!: Invert the photo.
- Hard-boiled: Convert the photo to stark black and white. Select repeatedly to increase effect.

## Doodle



Stamp selection

Select color for sketch pen

Erase tool

Zoom in

Eyedropper tool: Copy a color from the photo

1. Select the eyedropper icon and press the A Button.
2. Move the eyedropper icon over a part of the photo where you want to copy the color and press the A Button.
3. The cursor will change to the selected color.

Scissors tool: Cut and paste a piece of the photo

1. Select the scissors icon and press the A Button.
2. Move the scissors icon over a part of the photo where you want to cut and paste and press the A Button. A cut frame will appear.
3. Press the A Button to cut the area and again to paste it.

Erase all doodles and restore the photo to its original appearance

NOTE: Move the Wii Remote Plus closer to the TV to increase the size of the sketch pen or stamp. Move the Wii Remote Plus away from the TV to reduce the size of the pen or stamp. Twist the Wii Remote Plus to rotate the pen or stamp.

## Puzzle

When you select this option, your photo will be divided into pieces.

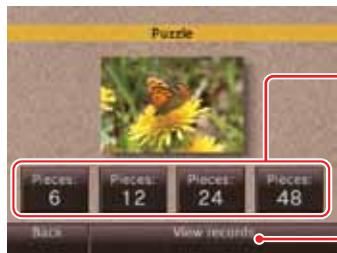
To reassemble the pieces, move the cursor over a piece and press and hold the A Button. Move the piece into place and drop it by releasing the A Button.



Move pieces

Get a hint

View the original image.



Number of puzzle pieces

The puzzle starts with six pieces. After completing that level, you can choose the number of pieces to start with.

View records for shortest completion time

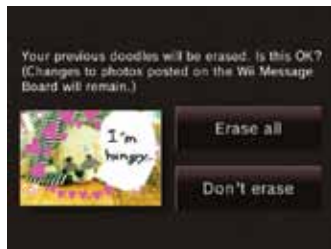
## ■ Saving Mood and Doodle Changes

Changes made to your photos can only be saved by posting your photo to the Wii Message Board (see page 21).

**You cannot save or overwrite photos or videos on the SD Card.**

- You can make Doodle changes to only one photo at a time. If you select another photo while you have a modified photo open, you will see the following warning screen, shown at right.

**NOTE: Erased doodles cannot be recovered.**



- When you return to the Photo Channel start screen, any Mood or Doodle changes will be erased unless you post your modified photos to the Wii Message Board. You will be notified by this screen:



## ■ Viewing Your Videos

Select a video from the photo album to begin playing it.

- Hold down the 1 Button on the Wii Remote Plus to rewind the video.
- Hold down the 2 Button on the Wii Remote Plus to advance the video.

Tap these buttons to rewind or advance the video a little.

**NOTE:** Any of the options available in the Fun! mode can be applied to individual frames of a video.



## ■ Posting Photos to the Wii Message Board or Wii Menu

You can save your photos or single frames from videos from an SD Card to the Wii System Memory by posting them to the Wii Message Board or Wii Menu.

When you display a photo or video frame in full-screen mode, you will have the option to post that photo to the Wii Message Board or Wii Menu. If you select Post you will see the following confirmation screen:



- Images that have been modified by Mood or Doodle changes also can be saved to the Wii Message Board or Wii Menu.
- You can use the Wii Message Board to send photos to anyone on your list of Wii Friends (see page 36).

**NOTE:** See page 32 for information on deleting messages from the Wii Message Board. When deleting images posted to the Wii Message Board, you must delete the entire message.



## SD Card Information

SD Cards are used in many digital cameras and cell phones and for data storage on PCs. Refer to the instruction manuals for these devices for information on how to store data on the SD Cards.

The Wii console accepts only SD or SDHC Cards (**32 GB maximum**), including miniSD, miniSDHC, microSD, or microSDHC Cards when used with their respective adapters. To use the Photo Channel, you must have an SD or SDHC Card with compatible image data stored on it.

**Some Channels or software may be incompatible with SDHC-type memory cards.** Additionally, though any SD Card with the above specifications may work, Nintendo has licensed specific SD Cards for use with the Wii console. Additional information on software compatibility issues, or compatible SD Cards can be found in the Wii – System and Accessory Set Up section at <http://support.nintendo.com>.

**See the SD Card Menu section (page 66) in this manual for more information on using SD Cards with the Wii system.**



SD Card



SDHC Card



miniSD Card  
and Adapter



microSD Card  
and Adapter

The Wii console also accepts mini- and microSDHC Cards (**32 GB maximum**), when used with their respective adapters.

## Supported File Formats

The Photo Channel can display or play files in the following formats:

### Image Files

Format: JPEG, baseline only.  
Size: Up to 8192 x 8192.

### Video Files

Format: QuickTime (motion JPEG), (.avi files).  
Size: Up to 848 x 480.

### Audio Files

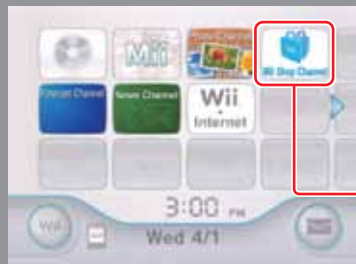
Format: AAC  
(MP4 format files with ".m4a" file extension that have been AAC encoded.)

#### PLEASE NOTE THE FOLLOWING:

- Some files in the above formats may not work with the Photo Channel.
- The audio components of some video files may not be playable.
- Using an SD Card with slow transfer speed may result in longer load times or irregular video playback.



# Wii Shop Channel



The Wii Shop Channel allows you to download new Channels, or to use Wii Points to download Virtual Console games and other programs such as WiiWare titles, or purchase other goods offered (when available) on the Wii Shop Channel.

Wii Shop Channel

Wii Menu

To select an on-screen option, simply point at it with the Wii Remote Plus and press the A Button.

## Using the Wii Shop Channel

You will need the following to use this Channel:

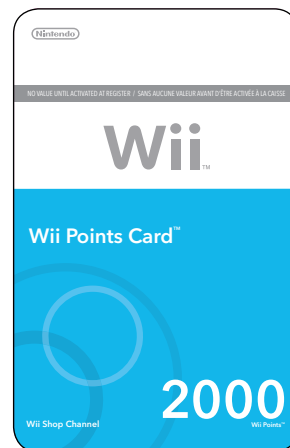
### ■ An existing broadband Internet connection

See pages 53-61 for information on connecting your Wii console to the Internet.

### ■ Wii Points

You can purchase a Wii Points Card™ at many retailers that carry Nintendo products, which can be redeemed for Wii Points on the Wii Shop Channel. You can also purchase Wii Points through the Wii Shop Channel using a credit card.

NOTE: Your use of the Wii Shop Channel is subject to your acceptance of the Wii Users Agreement, the Wii Privacy Policy and the Wii Code of Conduct. Copies of the most updated versions of these agreements may be found at [support.nintendo.com](http://support.nintendo.com).



### ■ Going shopping

In the Wii Shop Channel you can use Wii Points to download additional features and items—including selected titles of your favorite classic NES, Super NES, Nintendo 64, Sega Genesis, and TurboGrafx16 systems, and more (subject to availability).

**NOTE: Some Virtual Console games can only be played with a Classic Controller™ (sold separately).**

While browsing the catalog of available content in the Wii Shop Channel, you can select a game from the list to view detailed information, including details about the number of points needed to download the game. If you have enough points in your account, download the game and it will be added as a channel on the Wii Menu.

If you need to add points to your account, you can either buy points with a credit card, or redeem a Wii Points Card (sold separately) for Wii Points. To add points, go to the Add Wii Points menu.

- To buy Wii Points with a credit card, select this option from the menu, enter your credit card information, and choose the amount of points you would like to buy. Once you confirm your purchase, the points will be added to your account.

**NOTE:** In some countries, you may not be able to purchase points with a credit card and this option will not be available from the menu. To add points to your account, you will have to purchase a Wii Points Card.

- To redeem a Wii Points Card, select this option from the menu. Scratch off the silver area on the back of the card to reveal the Points Card activation number. Enter the activation number into the appropriate field on the screen. After you submit the number, the number of points printed on the front of the card will be added to your account.

### Important Notes about the Wii Shop Channel and the use of Wii Points

- Points have no monetary value and cannot be redeemed for cash. All points and software downloads are only for use on a single Wii console and are non-refundable and non-transferable.
- A maximum number of unused points can be stored on one Wii console.
- Additional hardware accessories may be required to use Wii software downloaded from the Wii Shop Channel and are sold separately.
- Software downloaded from the Wii Shop Channel is licensed to you, not sold.
- Wii Points are subject to a User Agreement, which may be viewed at <http://support.nintendo.com>.
- Wii Points are only redeemable for downloading software or purchasing goods offered on the Wii Shop Channel.
- If your Parental Controls are set to restrict use of points, you will be able to purchase Wii Points using a credit card, or redeem a Wii Points Card, but use of these points will be restricted by your Parental Controls setting.
- Please visit <http://support.nintendo.com> for more information.

# Virtual Console



Download Virtual Console games from the Wii Shop Channel and play games from the NES™, Super NES™, Nintendo 64™, Sega Genesis, TurboGrafx16, Virtual Console Arcade, and more (subject to availability). After downloading, a Virtual Console game will appear as its own channel in the Wii Menu.

Example of Virtual Console Channel Preview screen

Note: An Internet connection is required to download Virtual Console games.

## Virtual Console Games

### Virtual Console Game Controllers

Select "View compatible controllers" on the Details screen to see the type of controllers that can be used with each Virtual Console title on the Wii Shop Channel (see image at right). The illustrations show one possible way of holding the controllers during game play.

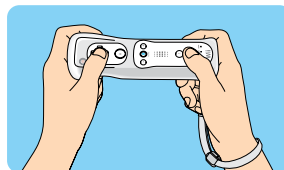
**The controllers used for Virtual Console games may vary depending on the game.** Be sure to check the information on the Wii Shop Channel to see which controllers are needed to play specific games before redeeming your Wii Points for downloadable software.

- Some games use a USB keyboard. See page 68, or the Software Download screen on the Wii Shop Channel for more information.



	The Wii Remote Plus can be used with this game.
	The Classic Controller/Classic Controller Pro can be used with this game.

### Wii Remote Plus



### Classic Controller Pro (sold separately)



### Virtual Console Game Manuals

To view a manual for a Virtual Console game that you have downloaded, follow these steps:

- Press the Home Button on the Wii Remote Plus or Classic Controller.
- Select Operations Guide from the Home Menu.
- A contents menu will appear:

NOTE: Similar manuals will be available for new channels that are downloaded.



- A scroll bar will appear if there is more information than can fit on one screen.
- Use the + Control Pad to scroll through the menu, then press the A Button to view your choice.
- Press the Home Button again to close the menu.

NOTE: Your download and use of Virtual Console games is subject to your acceptance of the Wii Users Agreement, the Wii Privacy Policy, and the Wii Code of Conduct. Copies of the most updated versions of these agreements may be found at support.nintendo.com.

### Saving Virtual Console game titles

Virtual Console game titles are saved in the Wii console memory.

- A Virtual Console title can be copied onto a SD Card but cannot be played on a different Wii console. It must be played on the original console it was downloaded to.

### Saving Game Save Data

Save data for Virtual Console games is saved in the Wii console memory. **Note that some games do not have a save feature or allow data to be copied to an SD Card.**

- Save data can be copied to an SD Card

For more information on using SD Cards, see page 32 in the Operations Manual - System Setup, and pages 40-41 in the Operations Manual - Channels and Settings.

### Suspending Your Game

Some Virtual Console games allow you to suspend your game and return to it at a later time. When you suspend play, a Suspend Point is created and saved in the Wii console memory.

- A Suspend Point is deleted when you resume the game.
- You cannot copy a Suspend Point to an SD Card, even if you move the Virtual Console game title to an SD Card.

**NOTE: If you accidentally press RESET or turn off the power of the Wii Remote Plus or console, you may lose the Suspend Point.**



Download original Wii game titles available only from the Wii Shop Channel. After downloading, a WiiWare game will appear as its own channel in the Wii Menu.

Example of WiiWare game Start screen

Note: An Internet connection is required to download WiiWare games.

## WiiWare Games

### WiiWare Game Controllers

Select the "View compatible controllers" button on the Details screen to see the type of controllers that can be used with each WiiWare title for each game on the Wii Shop Channel (see image below). These may be different from game to game.



Sample WiiWare game Details screen

### WiiWare Game Manuals

WiiWare game manuals can be viewed both from the Details screen in Wii Shop Channel, or from the game after you have downloaded it.

### Viewing a manual from Wii Shop Channel:

1. Select the More Details option from the game Details screen on the Wii Shop Channel.



More Details option

2. Select the category of information from the table of contents. A scroll bar will appear if there is more information then will fit on one screen.



Sample WiiWare Game Manual Contents menu

3. Use the following controls to navigate through the manual:



Up/Down - Scroll the screen up or down.



View instruction for selected item.



Return to Table of Contents page.



Close the Online manual.

### Viewing a manual from a downloaded WiiWare game:

1. From either the game title screen or during a game\*, press the HOME Button on the Wii Remote Plus or Classic Controller.
2. Select Operations Guide from the HOME Menu to see controller instructions.
3. Select View Detailed Instructions to go to the table of contents.

**\* IMPORTANT: Selecting View Detailed Instructions will end the game. Be sure to save your game data before choosing this option, or review these instructions before gameplay.**



### Saving WiiWare game titles

WiiWare game titles are saved in the Wii console memory or on an SD Card.

- A WiiWare title can be moved, copied, or saved onto a SD Card, but cannot be played on a different Wii console. It must be played on the original console it was downloaded to.

### Saving Game Save Data

Save data for WiiWare game titles is saved in the Wii console memory. **Note that some games do not have a save feature or allow data to be moved or copied to an SD Card.**

- Save data can be moved or copied to an SD Card

NOTE: Be sure to move the data back to the Wii system memory before starting the game again using the Data Management tool (see page 40).

For more information on using SD Cards, see pages 22 and 66.

### Add-on Content

Additional levels, maps, items, and other content can be downloaded for some titles. This content is saved in the Wii console memory.

- Additional Wii Points may be necessary to download add-on content.
- Most add-on content can be moved or copied to an SD Card, although some add-on content cannot be moved or copied.
- Although add-on content can be moved or copied onto a SD Card, it cannot be used on a different Wii console. It must be used on the original console it was downloaded to.

NOTE: Your download and use of WiiWare games is subject to your acceptance of the Wii Users Agreement, the Wii Privacy Policy and the Wii Code of Conduct. Copies of the most updated versions of these agreements may be found at support.nintendo.com.

# Wii Message Board



Keep in touch with friends and family through the Wii Message Board. Exchange messages and pictures with family members. If you have a broadband Internet connection, you can also exchange messages with your Wii Friends and receive news on upcoming games, events, and more.

Message Board Icon  
Wii Menu

To select an on-screen option, simply point at it with the Wii Remote Plus and press the A Button.

## Using the Wii Message Board

Use the Wii Message Board to:

- Exchange messages with friends and family members.
- Add photos or Mii characters (see Mii Channel, page 6) to your messages.
- Check your console's unique Wii Number.

Your Wii Number is a 16-digit number assigned to your console. Use your Wii Number to register Wii Friends. (See page 38 to learn how to register a Wii Friend).

The following features require an Internet connection (see Wii Settings and Data Management, pages 53-61, for more information on Internet connections).

- Send messages to your Wii friends' consoles or e-mail addresses.
- Register Wii Friends in the Message Board Address Book.

You can only exchange messages or use other Internet-based communication with your Wii Friends.

NOTE: Your ability to send and receive messages on your Wii console is subject to your acceptance of the Wii Users Agreement, the Wii Privacy Policy and the Wii Code of Conduct. Copies of the most updated versions of these agreements may be found at support.nintendo.com.

## Opening the Message Board

Select the Message Board icon from the Wii Menu.

- This icon will blink if you have a message waiting for you.

The Message Board will appear:



Message Board



## Wii Message Board

From the Message Board, you can see if you have any messages posted for you. From this screen, you can also:

- Reply to messages.
- Open the Calendar.
- Create a message.
- Cancel message service from Channels (see page 39).
- Return to the Wii Menu.

### Read or reply

Select and hold the A and B Buttons to grab and move this icon.

### Photo icon

This icon will appear on messages that have photos attached.

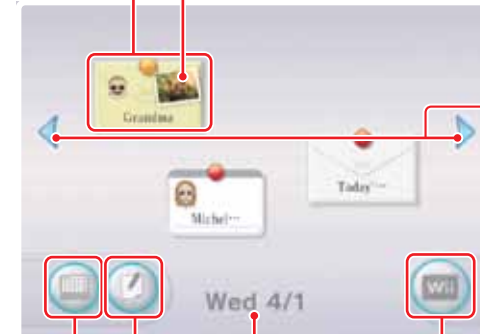
### Change days

Move forward or back a day. If you receive more than ten messages a day, select these to display any messages beyond ten.

New message  
(Less than 6 hours old.)

Message  
(More than 6 hours old.)

The pin will light on newly attached messages.



Open the calendar  
See page 33.

Date

Create message  
See page 34.

Message Board

Return to the Wii Menu

## Today's Accomplishments

Each time you play a game (Wii games only) or a Wii Channel, the Wii records how long you spent playing it, and then sends you a message titled "Today's Accomplishments." This also records your sent message history from the Message Board. This message cannot be deleted.

# Wii Message Board

## ■ Reading Messages



To read a message, move the cursor over a message and press the A Button. The sender's name and message text will appear, along with information like any attached photos or Miis.

Sender's name

Delete message

Deleted messages cannot be recovered.

Mii

This only appears if the sender has attached a Mii to the message (see page 35).

Back

Return to the Message Board.

Message text

Photo

Select the photo to view a larger image. You can also send attached photos to other recipients (see page 36).

Message

Reply

Reply to a message (see page 36).

## ■ Calendar



Select the Calendar icon to open the Calendar. Select a date on the calendar to open the Message Board for that day.

Here is a sample Calendar. The appearance varies depending on how many messages you receive.

Open date

Open the Message Board for a particular date.

Message icon

Appears on days with messages.

Back

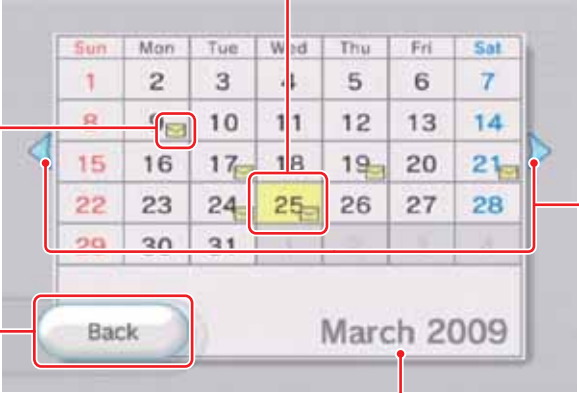
Return to the Message Board.

Change months

Move forward or back a month. You can also do this by pressing the Plus (+) or Minus (-) Buttons on the remote.

Calendar screen

Month and year of displayed calendar page.



NOTE: The Calendar displays dates from January 2000 to December 2035.



## ■ Creating Messages



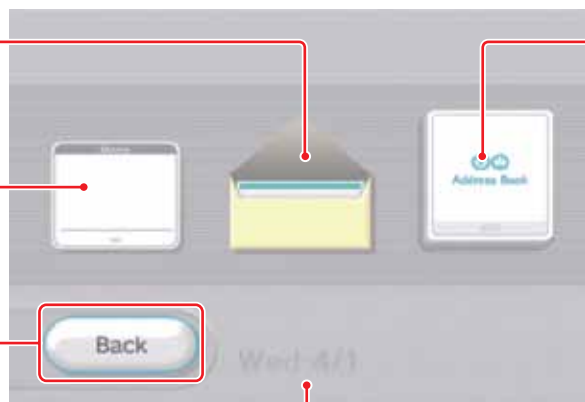
From the Message Board, select the Create Message icon. From here, you can open the Address Book, write a memo to post to the Message Board, or write a message to send to a Wii Friend.

NOTE: Before sending messages to Wii Friends, you must first register them in your Address Book (see page 38).

**Create message**  
Create a message to send to a Wii Friend (see page 35).

**Create memo**  
Create a memo to post to the Message Board (see page 35).

**Back**  
Return to the Message Board.



**Address Book**  
Check your console's Wii Number or register a Wii Friend.

Create Message screen

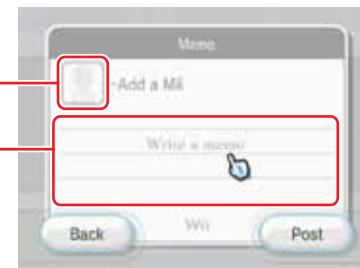
Current date

## ■ Creating and Posting a Memo to the Message Board

1. Open a blank memo by selecting the Create Memo icon from the Create Message screen.
2. Move the cursor over the text area of the memo and press the A Button to open the virtual keyboard. See page 70 for more information on the virtual keyboard.
3. Enter text by moving the cursor over the desired letter and pressing the A Button.
4. To attach a Mii, select the Mii icon, then select the Mii you would like to use.
5. Select Post to post your memo.

Mii icon

Text area



## ■ Creating and Sending a Message to a Wii Friend

**NOTE: To use this feature, you must have an Internet connection and register your Wii Friend in the Address Book (see page 38).**

1. Select the Create Message icon on the Create Message screen.
2. Select a Wii Friend to send a message to from the address book, and then press the A Button.



Address Book sample page

3. Move the cursor over the text area of the message and press the A Button to open the virtual keyboard. See page 66 for more information on the virtual keyboard.
4. Enter text by moving the cursor over the desired letter and pressing the A Button.
5. To attach a Mii, select the Mii icon, then select the Mii you would like to use. This option only works when sending your message to another Wii console.
6. Select Send to send your message.

# Wii Message Board

## ■ Replying to a Message

1. From the Message screen, select Reply.
2. Move the cursor over the body of the memo and press the A Button to open the virtual keyboard. See page 70 for more information on the virtual keyboard.
3. Enter text by moving the cursor over the desired letter and pressing the A Button.
4. To attach a Mii, select the Mii icon, then select the Mii you would like to use. This option only works when sending your message to another Wii console.
5. Select Send to send your message.

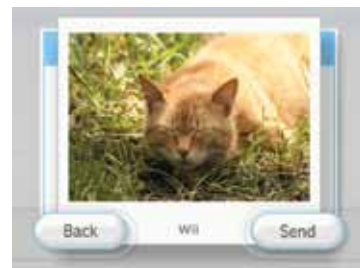


**Photo icon**  
This icon appears if a photo has been attached to the message.

## ■ Sending a Photo

You can send a photo that was posted to the Message Board from the Photo Channel program, or that was attached to an incoming message. Begin by selecting a message from the Message Board that has a photo icon on it. (See page 21 for information on posting photos to the Message Board.)

1. From the Message screen, select the photo, then select Send.



2. Select a Wii Friend to send a message to from the address book, and then press the A Button.
3. Enter text by moving the cursor over the desired letter and pressing the A Button.
4. To attach a Mii, select the Mii icon, then select the Mii you would like to attach to the message. This option only works when sending your message to a Wii Friend on another Wii console.
5. Select Send to send your message.

## ■ Using the Address Book

To open the Address Book, select the Address Book from the Create Message screen. From here, you can:

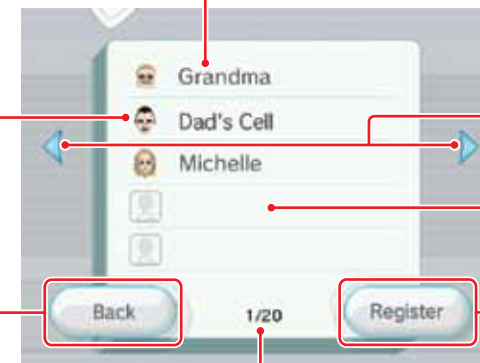
- Confirm your Wii Number.
- Register a Wii Friend (up to a maximum of 100).
- Edit registration details.
- Send a message.

**Wii Friend entry**  
Select to send a message or edit information.

**Mii**  
Assign a Mii to a Wii Friend.

**Back**  
Return to previous screen.

**Page display**  
Current and total pages.



**Change pages**  
Move forward or back a page.

**Open entry space**  
Select to register a Wii Friend.

**Register**  
Select to register a new Wii Friend.

### Editing the order of your Address Book:

You can rearrange the order of your entries by using the A and B Buttons simultaneously and dragging the entry up or down the list. Drag the entry over a scroll button to move to another page.

# Wii Message Board

## ■ Registering a Wii Friend

NOTE: To register a Wii Friend, your Wii console must be connected to the Internet with a broadband Internet connection.

1. Select the Address Book option from the Create Message screen (page 32).
2. Select the Register option from the Address Book screen.
3. Select the Wii option to register another Wii console or select the Others option to register an e-mail address.
4. For a Wii console, enter the Wii Number for that Wii console. For a PC or cell-phone user, enter an e-mail address (cannot contain over 100 characters).
5. Enter a nickname for your friend.
6. To attach a Mii, select the Mii icon, then select the Mii you would like to use. This option works only when registering a Wii console user.
7. Select OK to confirm the information and register your Wii Friend.



## ■ Editing or Deleting Wii Friends

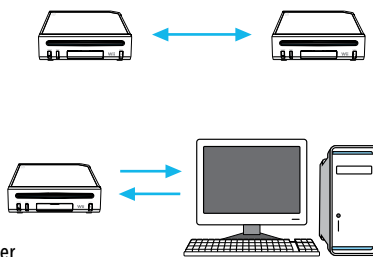
1. Move the cursor over the Wii Friend nickname in the Address Book and press the A Button.
2. Select from Change Nickname or Erase.

NOTE: If you erase a Wii Friend entry, it will be permanently deleted from your Address Book.



## ■ Exchanging Messages or Data with WiiConnect24

- If both parties are Wii users, you must register each other as Wii Friends to exchange messages or data.
- If one party is a Wii user and the other is a PC or cell-phone user, a registration e-mail will be sent to the PC/cell-phone user during the Wii Friend registration process. The PC/cell phone user will need to respond and accept in order to complete the registration.



NOTE: You will not be able to send photos from your Wii console to the PC/cell phone user.

## ■ Viewing Your Wii Number

The Wii Number is a 16 digit number assigned to each Wii console. By exchanging Wii Numbers with other Wii users, you can register your Wii system to a Wii Friend.

1. Select Address Book from the Create Message screen.
2. Your console's Wii number will be displayed.



## ■ Canceling Wii Channel Message Service

An option to "opt-out" or stop delivery may appear for some messages sent to you from certain Wii Channels. You can stop the delivery of these messages by selecting this icon and choosing one of two settings:

1. Choose "This message service" to stop messages from this Channel only.
2. Choose "All message services" to stop messages from all Channels.



When you download a new channel, you will have the same opportunity as described above to decide whether or not to receive messages from channels.

NOTE: You will still receive messages from your Wii friends.

## ■ Transferring Data to an SD Card

If the Wii System Memory is full, you can save data to an SD Card. For more information on using SD Cards in the Wii console, see pages 22 and 66.

1. If you get a message on the Wii console that there is no more room for additional Message Board data, insert an SD Card into the SD Card Slot on the front of the Wii console.



If there is already an SD Card in the SD Card Slot when you run out of space in the console memory, you will be asked if you want to save to the SD Card.

2. Confirm that you want to save data to the SD Card.
3. A set number of messages will be saved to the SD Card, starting with the oldest messages.

CAUTION: Do not remove the SD Card or turn the power off while transferring data. This can damage the data or the SD Card.

4. If you do not insert an SD Card after the memory-full message, the oldest messages will be deleted automatically.

# Wii Settings and Data Management



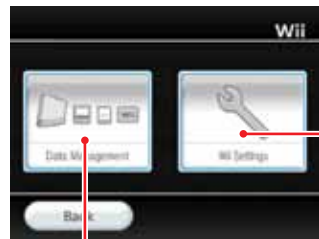
In Wii Settings and Data Management, you can manage data saved in your Wii console as well as in your external memory media. You can also adjust settings that affect many aspects of your console, such as the Sensor Bar, the Internet connection, WiiConnect24, time settings, and other functions.

Wii Icon  
Wii Menu

To select an on-screen option, simply point at it with the Wii Remote Plus and press the A Button.

## Getting Started

To reach Wii Settings and Data Management, select the Wii icon on the bottom left of the Wii Menu screen. (If more than one remote is connected, use Player 1.)



Data Management

Wii Settings  
Configure your time settings, Internet configuration, WiiConnect24, and other system options.

## Data Management

Select Data Management from the Wii Options screen to see a choice of two kinds of data you can manage: Save Data and Channels. Select one to proceed.



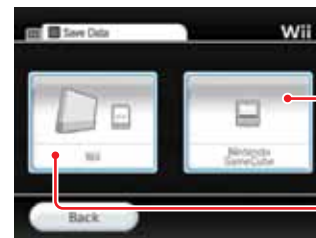
Channels  
Lets you delete specific Channels or save them to an SD Card (see page 42).

Save Data  
Lets you organize and delete the save data in Wii System Memory and SD Cards.

**IMPORTANT:** If you are trying to completely remove data to free up space on your system, data may need to be deleted or moved to an SD card from both the Save Data and Channel areas. For more information on managing your Wii console available memory space, visit <http://support.nintendo.com/wiimemory>. If you accidentally delete downloaded content from your Wii system memory, you can download it again using the Wii Shop Channel. (This service may be discontinued without notice.)

## Save Data

Select Save Data from the Data Management screen to see two kinds of data management: Select Wii to proceed (**Nintendo GameCube data management is unavailable on this model of Wii system**).



Nintendo GameCube

Wii  
Manage data in the Wii System Memory and SD Cards.

**NOTE:** You cannot move or copy data files in the following cases:

- When there's not an SD Card inserted in the SD Card Slot.
- When there's not enough space in the Wii System Memory or SD Card that you're trying to move or copy a file to.
- When you're trying to move or copy a file that you're not allowed to move or copy.
- When the SD Card is write-protected.

## Wii

You can move, copy, and delete data found in the Wii System Memory and SD Cards.

First select the Wii option to look at all data saved in the console's internal memory, or select the SD Card option to view the data saved on an SD Card inserted in the SD Card Slot.

Select the data you want to manage, then select Copy or Delete.



Channels

When you enter the Channels management screen, you'll see all of the individual Channels currently on your Wii console. Select a specific Channel to see three options appear: Delete, Copy or Move.

Select the Delete option if you want to erase a Channel.

Select the Copy or Move option if you want to copy or move the Channel to an SD Card.

NOTE: You cannot copy or move Channels in the following cases:

- When there's no SD Card in the SD Card Slot.
- When there's not enough space in the SD Card.
- The kind of SD Card you're using is incompatible with the Wii console (see page 22).

Wii Settings

Select Wii Settings from the Wii Options screen to see the wide variety of system settings that you can change. To scroll to a different options page, use the Wii Remote Plus to point at a left/right arrow to scroll to a different selection page. (If more than one remote is connected, use Player 1.)

Select the Wii system option that you wish to change. Consult the next page to see all of the options.



Console Nickname	Give your Wii console a unique nickname.	page 44
Calendar	Set the date and time.	page 44
Screen	Configure your screen output settings.	page 45
Sound	Configure your sound output settings.	page 47
Parental Controls	Restrict use of Wii software, Channels, and purchasing functions	page 48
Sensor Bar	Configure your Sensor Bar sensitivity and placement settings.	page 52
Internet	Configure your internet connection settings.	page 53
WiiConnect24™	Change your WiiConnect24 and Standby Connection settings.	page 62
Language	Select the language display.	page 63
Country	Select the country where your Wii console will be used.	page 63
Wii System Update	Check for Wii system updates.	page 63
Format Wii System Memory	Delete ALL Channels and Save Data in Wii System Memory.*	page 63

\*Additional steps are required to delete your Wii Shop Channel account activity and rights to play previously downloaded Virtual Console games. Please see page 63 for instructions on how to delete this information.



# Wii Settings and Data Management

## Console Nickname

You can give your Wii console a Console Nickname to distinguish your Wii console from others when you are connecting with other Wii consoles. To change the current nickname, select the text area, then use the Wii keyboard (see page 70) for entering the new Console Nickname. Confirm your change once it's complete.



## Calendar

You can change your Wii console's Calendar settings by selecting the Date or Time options.

### Date Setting

Change the date by pointing at the up/down arrow that corresponds to the year, month, or day, then pressing A until you see the correct number. Confirm your Date changes once they're complete.



### Time Setting

Change the time by pointing at the up/down arrow that corresponds to the hours or minutes, then pressing A until you see the correct number. Confirm your Time changes once they're complete.

NOTE: The Wii console uses a 24 hour clock. For example, 1:00 pm is displayed as 13:00.



## Screen

You can change your Wii screen output settings by selecting the Screen Position, Widescreen Settings, TV Resolution, and Screen Burn-in options.

### Screen Position

Change the horizontal screen position by pointing at the left/right arrows, then pressing A until you see the horizontal shift you want. (The range is - 8 to + 8.) Confirm your position change once it's complete.



## Widescreen Settings

You can change the screen format for your Wii display by selecting the Standard (4:3) or Widescreen (16:9) options. Confirm your selection once it's complete.



Standard  
(4:3)

Standard (4:3)  
Select when you're using a television that supports only standard 4:3 screen aspect ratio.

Widescreen  
(16:9)

Widescreen (16:9)  
Select when you're using a widescreen television or a television that supports a 16:9 widescreen aspect ratio.

#### NOTES:

- If set to 4:3, set the television screen size to "standard" or "normal", to display video without altering the vertical and horizontal ratios. This term may be different depending on the manufacturer of your television.
- In addition to using Wii's widescreen setting, you must also adjust your television's options to take advantage of its own widescreen mode(s).
- Some television sets will not change to widescreen display even when receiving wide screen input from the Wii console.

# Wii Settings and Data Management

## ■ Screen (continued)

### TV Resolution

Some Wii software supports a 480p progressive output that displays at a higher resolution than the Standard 480i resolution. To view Wii display output in 480p, you must change the Wii's TV Resolution setting from Standard TV (480i) to EDTV/HDTV (480p). Confirm your selection once it's complete. (Games that do not support 480p will be displayed in 480i.)

Your television must be a high-definition TV (HDTV) or enhanced-definition TV (EDTV) to view 480p output.

In addition, you'll also need the separately-sold Wii Component Video Cable to connect your Wii to your HDTV or EDTV television. (You cannot see Wii progressive display output when the console is connected to a television using any other kind of cable.)



EDTV or HDTV (480p)

Select this display output when using the Wii Component Video Cable to connect with your HDTV or EDTV.

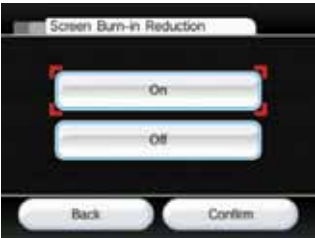
Standard TV (480i)

Select this display output when using any other kind of cable to connect with your television, such as the Wii AV Cable.

## Screen Burn-in Reduction

When images are displayed in the same spots for long periods of time, some television screens can suffer "screen burn-in." (See page 12 in the Wii Operations Manual - System Setup, for more information on TV screen damage.) The Wii console has a Screen Burn-in Reduction feature. When activated, the Wii console will fade the screen when Wii software is paused for five or more minutes. (You can revert the screen to its original brightness by simply pressing any button on the Wii Remote Plus other than the Power Button.)

You can turn Screen Burn-in Reduction on or off by making your selection, then confirming it.



- Your TV may also have its own screen burn-in reduction function that may fade back the screen imagery or darken it entirely.
- The Wii system's Screen Burn-in Reduction does not work for all types of software, so it is recommended that the television be turned off when not playing.
- Please follow your TV manufacturer's recommendations to avoid screen burn-in.

## ■ Sound

You can change the sound setting for your Wii output by selecting the Mono, Stereo, or Surround options. Confirm your selection once it's complete.



Mono

Select when you want Wii sound output to come equally out of the left and right TV speakers. **Some games may include only Mono sound.**

Stereo

Select when using software that provides different sounds for the left and right TV speakers to create a fuller audio effect.

Surround

Select when using software that provides different sounds for the left, right, and other TV speakers to create an even fuller audio effect. **Your game and TV must be compatible with surround sound to take advantage of this feature.**

# Wii Settings and Data Management

## ■ Wii Parental Controls

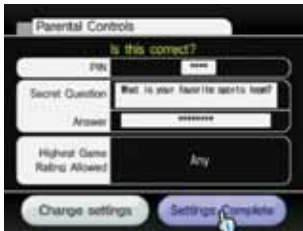
The Wii Parental Controls settings offer you a means to manage what Wii content is accessible to the console users. If you apply Parental Controls, you will be prompted to set a 4-digit PIN which will allow you to adjust the Parental Controls settings in the future and also allow you to access content that may be restricted by the Parental Controls settings. The Parental Controls default setting is "OFF" which means that the console will allow all content unless you change the settings. There is one Parental Controls setting per console so you should tailor the settings to lowest common denominator and share the PIN with users who may be allowed access to blocked content.

To customize the settings, click the Wii icon from the Wii Menu and select Wii Settings, then select Parental Controls. These are the features that are offered within Parental Controls:

- Access to Wii software and Related Content  
Setting is based on the Entertainment Software Rating Board ("ESRB") game rating categories. Please see page 50 for information on the various ratings. Note that this setting controls Wii, Virtual Console and WiiWare games and related content.



Selecting allowable video game content.



Confirming settings.

**If you connect to the Internet, you will be able to select these additional Parental Controls options:**

- Internet Channel  
Controls access to the browser and viewing of certain content which is not subject to game rating.
- News Channel  
Controls access to the News Channel.
- Online Communication and User Created Content  
Controls sending and receiving of messages from the Wii console and in online games where open text and/or verbal communication is available. Also controls exchange of user created content in compatible games. Note that system updates will be delivered regardless of this setting.
- Use of Wii Points  
Controls use of Wii Points. If this setting is on, users will be required to enter the Parental Controls PIN when using Wii Points to download content from the Wii Shop Channel.

If Parental Controls are applied and a user attempts to play or download content that exceeds the Parental Controls setting, the user will be prompted to enter the Parental Controls PIN to temporarily disable the Parental Controls. The PIN will be necessary each time a user tries to access restricted content. If your settings only apply to certain members of your household, share the Parental Controls PIN with users who may have unrestricted use of the system.

You will be prompted to select and answer a secret question that will allow you to retrieve a forgotten Parental Controls PIN. If you forget your PIN, please follow the prompts on screen to answer your secret question. If you are unable to retrieve your PIN by answering your secret question, please call Nintendo Consumer Service: USA/Canada 1-800-255-3700  
Latin America 1-425-558-7078

NOTE: Even with Parental Controls set, purchasing Wii Points, and the downloading of programs that do not require Wii Points will not be restricted.

## Important Privacy Information

**Through your Wii console you will be able to participate in a variety of games and activities, some of which will be online. In order to protect your privacy and that of your family when using your Wii console, we strongly recommend the following:**

### ■ PARENTS PLEASE READ: PROTECTING YOUR CHILDREN'S PRIVACY

- Before allowing your children to use the Wii console, we highly recommend that you educate them on the importance of not sharing any personal information about themselves with strangers. Please carefully review the next section titled "Protecting the Privacy of Your Personal Information When Using the Wii Console" and discuss it with your children to help them understand steps they can take to protect the privacy of their personal information. Explain to them the danger of receiving messages from, or communicating with, strangers.
- You should supervise your children's use of the Wii console at all times and assist them with the setup of the Wii console. If at any time you want to stop your children's use of online or interactive features of the Wii console, you can simply disconnect your Wii console from the Wii online services as explained on page 48.

### ■ PROTECTING THE PRIVACY OF YOUR PERSONAL INFORMATION WHEN USING THE Wii CONSOLE

- Never give out personal information about yourself such as your first or last name, phone number, birth date, age, school, e-mail or home address when communicating with strangers or using any services offered on your Wii console.

- You may have the option of linking your Wii Shop Channel account to your My Nintendo account. By linking your accounts, you will be able to register downloaded content and have such registrations reflected in both of your accounts. In addition, Nintendo will be able to connect your activity on your Wii Shop Channel and other online features of the Wii console to your My Nintendo Account and send you offers, surveys and promotions for games or other items you are interested in. If you do not want Nintendo to be able to do this, do not link your accounts.
- If you use the messaging features of the Wii console, you need to understand that Nintendo may monitor your use and share certain information (i) as required by law, (ii) where necessary to protect the company, its customers or employees, or (iii) as necessary to provide the services.
- If you decide to provide personal information to any third party website, the sharing of such information will be subject to the privacy policy of that company, not Nintendo's privacy policy. Be cautious before providing any personal information to any third party through the online services offered on your Wii console.
- Your Wii console may store certain personal information on your Wii Remote Plus so please note that by using your Wii Remote Plus on a Wii console other than your own, it is possible that certain personal information about you could be shared with that other Wii console.
- For your protection, prior to selling or transferring your Wii console, please be sure to clean and securely remove all of your personal information including any pictures or messages on the message board and all other stored sensitive information on the Wii console hard drive. For information on how to wipe your Wii console clean of all such information, see page 63.
- Do not use any personal information for nicknames on the Wii Console, user names in chat rooms or interactive games, names for Miis or for any other services offered through the Wii Console.

Video and Computer Game Software Rating Information

The Entertainment Software Rating Board (ESRB) ratings are designed to provide information about video and computer game content, so you can make informed purchasing decisions. ESRB ratings have two parts: **rating symbols** suggest age appropriateness for the game, and **content descriptors** indicate elements in a game that may have triggered a particular rating and/or may be of interest or concern.

To take full advantage of the ESRB rating system, it's important to check both the **rating symbol** (found on the front of the game box) and the **content descriptor** (found on the back of the game box). Go to [www.esrb.org](http://www.esrb.org) for a complete list of these content descriptors.

The ESRB rating system is designed to provide information about a computer or video game. The ratings are not meant to recommend which games consumers should buy or rent or to serve as the only basis for choosing a product. Rather, individuals should use the ESRB ratings together with personal tastes and standards when deciding what is best to purchase.

For more information on the ESRB and video game ratings, go to the ESRB web site at [www.esrb.org](http://www.esrb.org).

ESRB RATING SYMBOLS FOR VIDEO GAMES & PC SOFTWARE



Titles rated **EC (Early Childhood)** have content that may be suitable for ages 3 and older. Contains no material that parents would find inappropriate.



Titles rated **E (Everyone)** have content that may be suitable for ages 6 and older. Titles in this category may contain minimal cartoon, fantasy or mild violence and/or infrequent use of mild language.



Titles rated **E10+ (Everyone 10 and older)** have content that may be suitable for ages 10 and older. Titles in this category may contain more cartoon, fantasy or mild violence, mild language and/or minimal suggestive themes.



Titles rated **T (Teen)** have content that may be suitable for ages 13 and older. Titles in this category may contain violence, suggestive themes, crude humor, minimal blood, simulated gambling, and/or infrequent use of strong language.



Titles rated **M (Mature)** have content that may be suitable for ages 17 and older. Titles in this category may contain intense violence, blood and gore, sexual content and/or strong language.



Titles rated **AO (Adults Only)** have content that should only be played by persons 18 years and older. Titles in this category may include prolonged scenes of intense violence and/or graphic sexual content and nudity.



Titles rated **RP (Rating Pending)** have been submitted to the ESRB and are awaiting final rating. (This symbol appears only in advertising prior to a game's release.

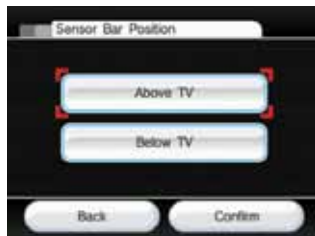
# Wii Settings and Data Management

## Sensor Bar

When positioning the Sensor Bar, you may need to adjust two key settings. Select Sensor Bar Position or Sensitivity, then proceed with the following instructions.

### Sensor Bar Position

You'll want to adjust this setting to match where you've placed your Wii's Sensor Bar: above or below your TV screen. Confirm your selection once it's complete.



## Sensitivity

Use this feature to adjust the sensitivity of the Pointer function of the Wii Remote Plus. If you find that you're not getting an optimal pointing experience with the Wii Remote Plus, you may want to adjust this setting.

After you select Sensitivity from the Sensor Bar settings screen, you'll see an explanation screen that further details the Sensitivity setting. Select OK to begin the adjustment test.

In the test, you'll use the Wii Remote Plus Pointer to move a cursor into view within the test field. If you see two blinking dots, your current Sensitivity setting is working fine. If you don't see two blinking dots, adjust the Sensitivity with the + and - Buttons until you do, then press the A Button to confirm your new setting.



- If you see three or more dots, the Wii Remote Plus may be sensing an extra light source. See Wii Remote Plus troubleshooting, page 34, in the Wii Operations Manual - System Setup.

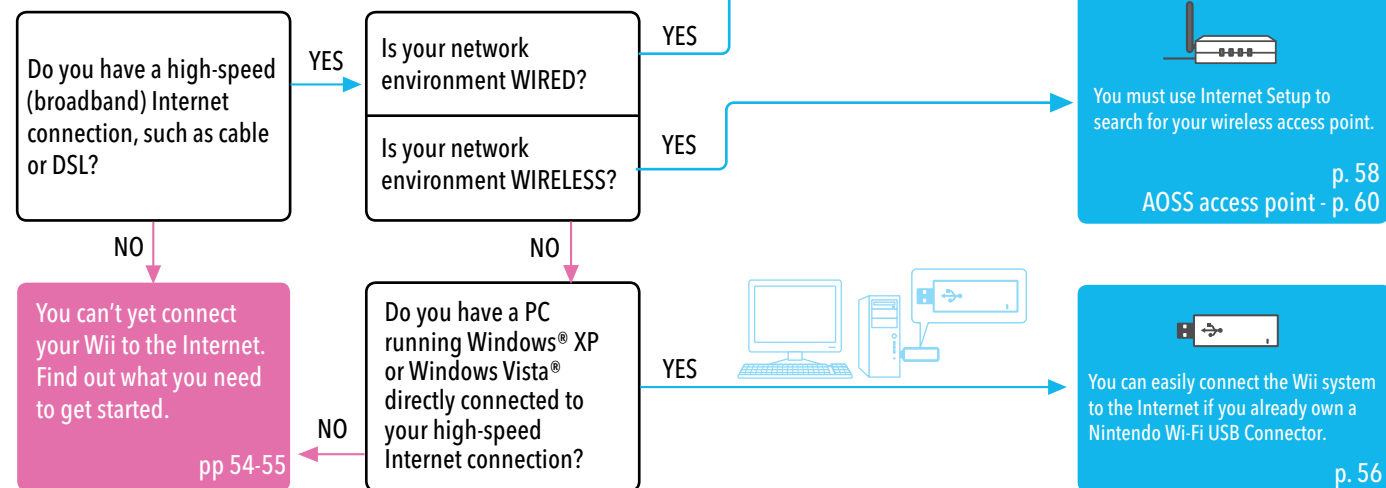
NOTE: The initial recommended distance for using the Wii Remote Plus Pointer is 3 to 10 feet from the Sensor Bar. By increasing the Sensitivity setting, you'll increase the distance at which you can use the Pointer. Also note that the influence of direct sunlight and various light sources can make the Pointer operation less optimal.

## Internet

You'll want to set up your Wii's Internet settings to work well with your home's Internet connection, whether you have a wireless broadband network or want to connect directly to your wired LAN network.

NOTE: When you connect the Wii to the Internet, the console's internal files will sometimes be automatically updated.

When you select Internet from the Wii Settings screen, you'll go straight to the Internet Setup screen. Before you proceed with setup selections, consult the following flowchart to determine what settings and equipment would work well with your home Internet environment.





# Wii Settings and Data Management

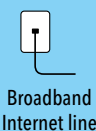
## What You Need for a Wireless Wii Environment

### 1. Wii System



### 2. Broadband Internet connection

There may be various ways to get broadband Internet connection to your home. Cable, DSL, and optical-fiber networks are among the most common. Check with your local broadband providers for more information.



Broadband Internet line

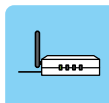
+



Wireless router

NOTE: Connecting to the Internet is subject to your acceptance of the Wii Users Agreement, the Wii Privacy Policy and the Wii Code of Conduct. Copies of the most updated versions of these agreements may be found at [support.nintendo.com](http://support.nintendo.com).

### 3. The following three methods provide the easiest, quickest way to create a wireless networking environment for Wii connection.



Access Point

- Wireless Router (Access Point)  
See page 58.
- AOSS™ Wireless Router (Access Point)  
See page 60.
- Manually Connecting an Access Point  
See page 59.

#### NOTE:

- The term Access Point is used throughout this manual to mean "wireless LAN access points."
- Use an 802.11 compatible Access Point.

### Nintendo Wi-Fi USB Connector – See page 56.



Nintendo Wi-Fi USB Connector

If you already own a Nintendo Wi-Fi USB Connector, but don't have a wireless network, you can still set up a wireless connection for your Wii. If you have a PC running Windows® XP or Windows Vista® directly connected to your broadband Internet access, you can use the Nintendo Wi-Fi USB Connector in an open USB port on the PC. Once you install the software that's included with the Nintendo Wi-Fi USB Connector, wirelessly connecting your Wii is easy.  
**(Check [support.nintendo.com](http://support.nintendo.com) for the latest PC driver versions.)**

**NOTE: Your PC must be ON when using this USB connector to connect to the Internet or WiiConnect24.**

## What You Need for a Wired Home Network

### 1. Wii System



### 2. Broadband Internet connection

There may be various ways to get broadband connection to your home. Cable, DSL, and optical-fiber networks are among the most common. Check with your local broadband providers for more information.



Broadband Internet line

+



Cable/DSL modem

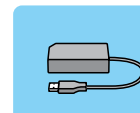
+



Broadband router

### 3. Wii LAN Adapter (Ethernet)

#### Wii LAN Adapter



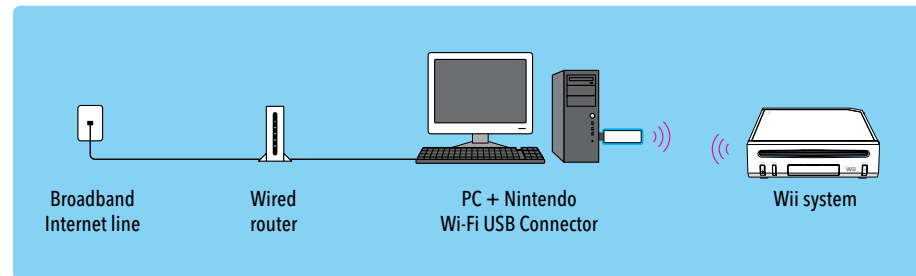
Wii LAN Adapter

If you rely on a wired high-speed local-area network (LAN) instead of a wireless network, you can connect Wii directly to your wired LAN with a Wii LAN Adapter. (Sold separately, may be ordered through Nintendo's web site at [www.nintendo.com](http://www.nintendo.com) (USA/Canada only) or by calling Customer Service at 1-800-255-3700.) See page 61 for easy Internet Setup details for using the Wii LAN Adapter.

# Wii Settings and Data Management

## Internet Setup Selections When Using the Nintendo Wi-Fi USB Connector

Before using the following Internet Setup procedure, ensure that you've installed the Nintendo Wi-Fi USB Connector Registration Tool software on the PC you're using with the connector. Consult the manual included with the Nintendo Wi-Fi USB Connector for more details on correct installation.

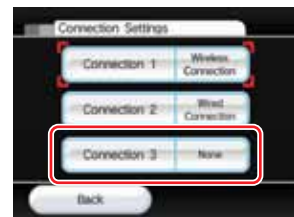


### Step 1



Select the Connection Settings option.

### Step 2



Select an open connection indicated by "None".

### Step 3



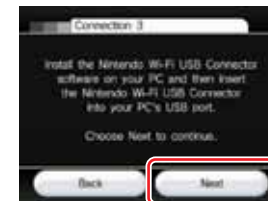
After confirming that the Nintendo Wi-Fi USB Connector is ready, select Wireless Connection.

### Step 4



Select Nintendo Wi-Fi USB Connector.

### Step 5 - Wii



After again confirming that the Nintendo Wi-Fi USB Connector is ready, select the Next option.



When you see this screen, continue with setup on the PC-side described below.

### Step 5 - PC



Nintendo Wi-Fi USB Connector Registration tool icon

You should see an icon in your Windows XP task bar for the Nintendo Wi-Fi USB Connector Registration Tool. Double-click on the icon to launch the tool. It should show all Wii consoles in wireless range, listing each by its Nickname. Select the Wii that you want to establish a wireless connection for, then click "Grant permission to connect" from the menu that appears.

### Step 6



After you've established the Wii connection with the PC, you'll see a Next option appear in the Wii console's Internet Setup. Select Next.

### Step 7



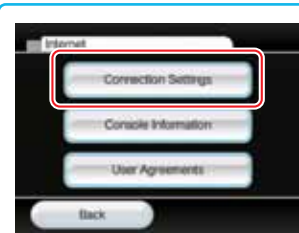
Select OK to test the connection.

If the test succeeds, you've completed Internet Setup and your Wii is wirelessly connected. If the test fails, consult the Troubleshooting section in this manual.

# Wii Settings and Data Management

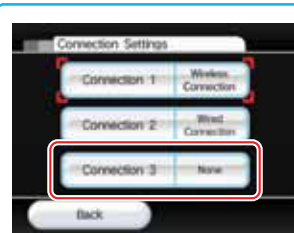
## Internet Setup Selections for Searching for an Access Point

### Step 1



Select the Connections Settings option.

### Step 2



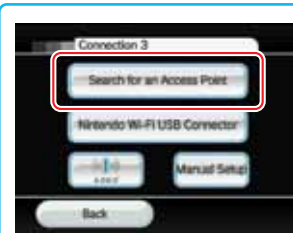
Select an open connection indicated by "None".

### Step 3



Select Wireless Connection.

### Step 4



Select Search for Access Point.

### Step 5



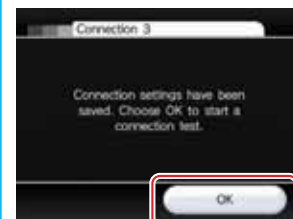
The Wii console will search for any identifiable wireless Access Points nearby. Select your Access Point from the list. Enter security information if applicable. See Troubleshooting for Internet connections if problems occur, page 73.

### Step 6



Select OK.

### Step 7



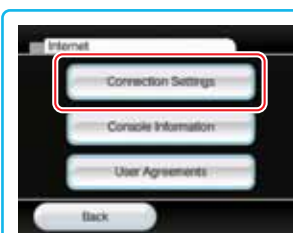
Select OK to test the connection.

If the test succeeds, you've completed Internet Setup and your Wii is wirelessly connected. If the test fails, consult the Troubleshooting section of the manual.

## Internet Setup Selections for Manually Connecting an Access Point

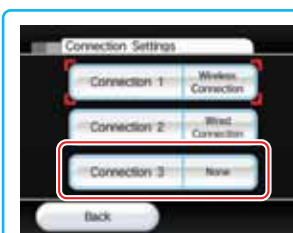
(Before trying to manually connect to your Access Point, try to search for it first using the instructions on the previous page.)

### Step 1



To manually connect, first select the Connection Settings option. Select the Console Information option if you need to check the MAC address. This information may be needed for manual setup.

### Step 2



Select an open connection indicated by "None".

### Step 3



Select Wireless Connection.

### Step 4



Select Manual Setup.



These screens require you to input settings from your PC or router to establish a connection. See support.nintendo.com for additional help on how to complete these screens.



Select OK to test the connection.

If the test succeeds, you've completed Internet Setup and your Wii is wirelessly connected. If the test fails, consult the Troubleshooting section of the manual.

## Wii Settings and Data Management

### Internet Setup Selections for an AOSS™ Access Point

If the access point you are using supports AOSS (Buffalo Corporation) you can easily configure your Internet settings with this feature. For details, refer to the instruction manual for your access point.

**NOTE:** If you are already using other wireless devices, using AOSS may change the settings of your access point.

#### Step 4



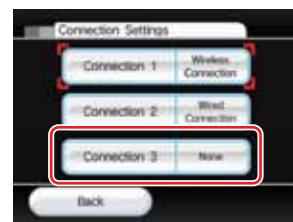
Select the "AOSS" option.

#### Step 1



Select the Connection Settings option.

#### Step 2



Select an open connection indicated by "None".

#### Step 3



Select Wireless Connection.

#### Step 5

##### Wii Console:

Follow the instructions on the TV screen.

##### AOSS Access Point:

Press the AOSS button (the SET switch), holding it down until each of the corresponding LEDs light up.

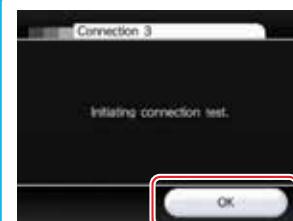
- If this procedure fails repeatedly, wait 3 minutes and try again.

#### Step 6



Select OK.

#### Step 7

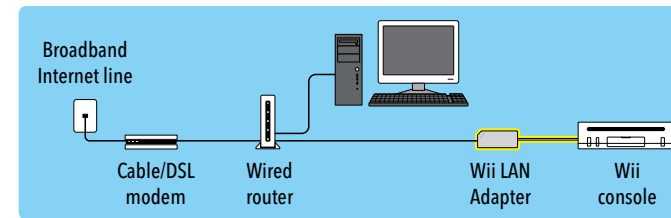


Select OK to test the connection.

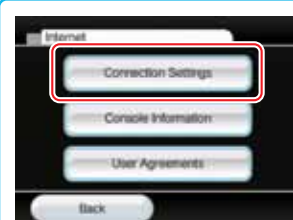
If the test succeeds, you've completed Internet Setup and your Wii is wirelessly connected. If the test fails, consult the Troubleshooting section in this manual.

### Internet Setup Selections for a Wii LAN Adapter

If you have a wired local-area network instead of a wireless network, you can connect your Wii directly to the network with a Wii LAN Adapter (subject to availability). Consult your adapter manual for details on how to connect a Wii LAN Adapter. (The Wii LAN Adapter does not support PPPoE.) When it's ready, step through the following Internet Setup process.

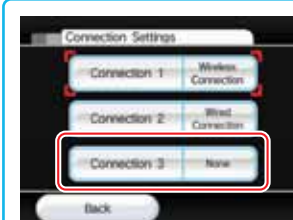


#### Step 1



Select the Connection Settings option.

#### Step 2



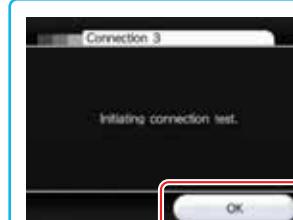
Select an open connection indicated by "None".

#### Step 3



Select Wired Connection.

#### Step 4



Select OK to test the connection.

If the test succeeds, you've completed Internet Setup and your Wii is connected. If the test fails, consult the Troubleshooting section of the manual.

**NOTE:** Select the Console Information option if you need to check the MAC address. This information may be needed for manual setup of an Internet connection.

# Wii Settings and Data Management

## ■ WiiConnect24™

WiiConnect24 allows your Wii console to receive a wide variety of data automatically. Use the WiiConnect24 settings to turn WiiConnect24 on and off, and to enable its Standby mode to receive data automatically 24 hours each day, even when the system isn't in active use. (Modem or router must be on to receive information automatically.)

### On/Off

When WiiConnect24 is turned on, your Wii console will automatically use its high-speed Internet connection to accept data for a variety of services, including posting messages on the Wii Message Board and receiving messages about new Wii features. Turn WiiConnect24 off if you don't want to receive this information. Confirm your selection once it's complete.



### Standby Connection

If you've turned your WiiConnect24 on (see above), you can additionally set WiiConnect24 to operate in Standby mode. This allows your Wii to automatically receive WiiConnect24 messages and information even when your system isn't in active use.

Turn the Standby option ON if you want WiiConnect24 to operate 24 hours each day. Turn it OFF if you want it to accept data only when you're actively using your Wii console. Confirm your selection once it's complete.



**To prevent operational errors or damage to stored data, be sure to turn off both WiiConnect24 and the Wii console before unplugging the AC Adapter. The Power LED lights red when both the power and WiiConnect24 are off.**

### Slot Illumination

WiiConnect24 can let you know when it has received data by making the Wii console's Disc Slot blink. Select the option that you want, then confirm your selection.

- Bright** The Wii's Disc Slot will blink bright blue when WiiConnect24 has received new data.
- Dim** The Wii's Disc Slot will blink a dim blue when WiiConnect24 has received new data.
- OFF** The Wii's Disc Slot will not blink when WiiConnect24 has received new data.



## ■ Language

You can change the language setting for your Wii console menus and screens by selecting English, French, or Spanish. Confirm your selection once it's complete.



## ■ Country

You can change the country setting for your Wii console. Confirm your selection once it's complete.



## ■ Wii System Update

Select this option to connect to the internet and check for new features, updates to channels or system updates.

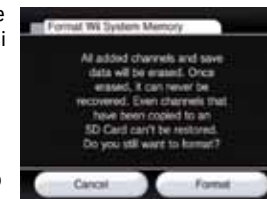
NOTE: Requires a broadband Internet connection.



## ■ Format Wii System Memory

This system option is used to permanently delete ALL Channels and ALL save data, including the Wii + Internet icon and video, that have been added to the Wii console and will re-initialize your Wii console.

Select the Format option if you wish to delete ALL Channels and save data, then select Delete to confirm your intention.



**NOTE: Programs that have been copied or stored on SD Cards before the format procedure will not operate after you have formatted the system memory.**

This Format Wii System Memory option only removes Channels and save data from the Wii console. Information stored in the Wii Shop Channel, including records of your transactions and rights to downloaded software, will not be cleared by this option. To clear information stored in the Wii Shop Channel, please follow the format Wii Shop Channel instructions.

### Remove Wii Shop Channel Account

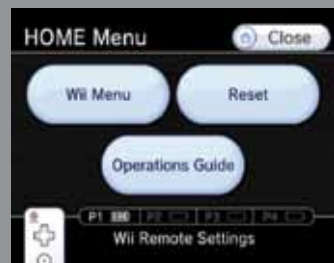
All activity on the Wii Shop Channel is tied to your Wii console. This includes records of your transactions, downloaded software, Wii Points and other information you provide via the Wii Shop Channel.

To clear information from the Wii Shop Channel, including records of your transactions and rights to downloaded software, access the Wii Shop Channel, select the Settings option and then select Remove Wii Shop Channel Account.

**IMPORTANT: You should format your Wii Shop Channel first, then your Wii system memory, prior to selling, recycling, or otherwise transferring your Wii console to any third party. For more information about privacy and the protection of your personal information, see page 49.**



# Home Menu



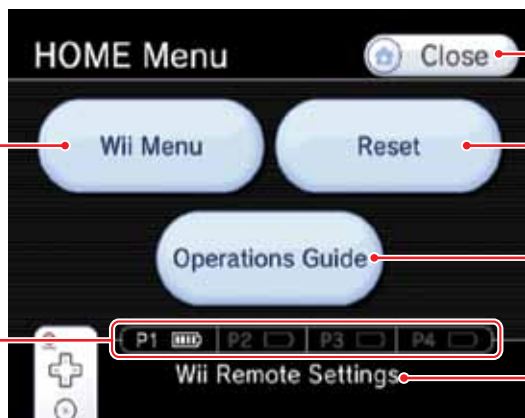
This menu appears when you press the HOME Button  on the Wii Remote Plus. From this menu you can stop or reset Wii programs, view operations guides for certain downloaded programs, and adjust Wii Remote Plus settings.

To select an on-screen option, simply point at it with the Wii Remote Plus and press the A Button.

## HOME Menu

Stop Wii software or programs that are currently in play and return to the Wii Menu.

Display the battery life for any remotes currently connected to the console.



Close and return to previous screen.

Reset Wii software and programs and return to the program title screen.

View downloaded guides for certain software or programs. (Only available if you have downloaded content.)

Select to go to the Wii Remote Plus Settings screen.

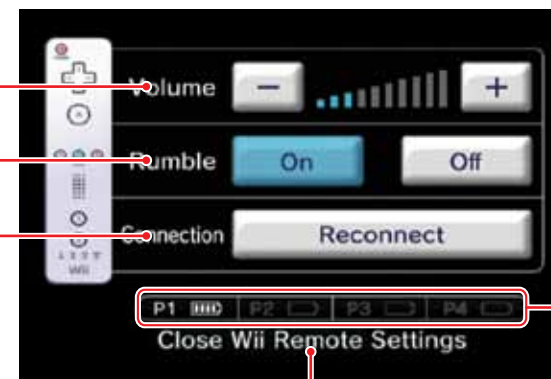
**NOTE: Selecting Wii Menu or Reset will permanently lose any unsaved information from the program you are currently running.**

## Wii Remote Plus Settings

Adjust the remote speaker volume.  
You can also use the + or - Buttons on the remote.

Turn the Rumble Feature on or off.  
(See NOTE below.)

Reconnect the Wii Remote Plus.  
Use this to change the Wii Remote or Wii Remote Plus you are using or to change the player number order (see below). Also see pages 22-23 in the Wii Operations Manual - System Setup for more information.



Displays the battery life for any Wii Remote Plus currently connected to the console.

Close the Settings menu and return to the Home Menu.



Synchronizing a Wii Remote or Wii Remote Plus – for each remote, use the following steps (also see pages 22-23 in the Wii Operations Manual - System Setup):

1. Select the Reconnect option.
  2. Press the 1 and 2 Buttons simultaneously on the remote.
  3. The Player LEDs will blink until a connection is established.
  4. Press any button to return to the Home Menu.
- NOTE: The order that you synchronize remotes will set the player number order.

NOTE: Adjusting the Volume and Rumble settings will affect all remotes currently connected to the Wii console.

## SD Card Menu



From the SD Card Menu, you can easily start up programs you have saved to the SD Card, such as WiiWare, Wii Channels, and Virtual Console games.

NOTE: SD Cards are sold separately.

SD Card Menu Icon  
Wii Menu

To select an on-screen option, simply point at it with the Wii Remote Plus and press the A Button.

## Using the SD Card Menu

When you select the SD Card Menu icon from the Wii Menu, you will see a display of the contents of the SD Card. (If the icon is gray, there is no SD Card inserted into the SD Card slot.)

To edit the contents of the SD Card, see Settings and Data Management, page 40.

SD Card contents

Wii Channels, WiiWare, or Virtual Console games stored on the SD Card. (The images of some Channels may vary from the Wii Menu.)

Sample SD Card Menu

Return to the Wii Menu



Scroll icon

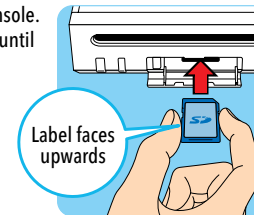
The SD Card Menu can hold a maximum of 240 items, but can only show 12 items at one time. Select the scroll icon to scroll to next page if you have more than 12 items stored. (You can also press the + or - Buttons on the Wii Remote Plus.)

View SD Card Menu instructions

Current and total page numbers

## Starting a program from an SD Card

1. Open the SD Card slot on the front of the Wii console. Insert the SD Card. Push it firmly into the slot until it clicks into place.



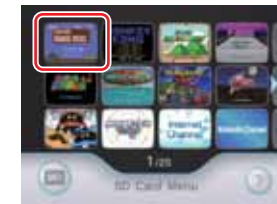
2. Select the SD Card Menu icon on the Wii Menu to see the contents of the SD Card.



Sample SD Card Menu



3. Select an item from the SD Card menu and press the A Button to open the Start screen.



4. Select "Start" to run the Channel, game, or other program. See the appropriate sections of this manual to find additional information for Channels, WiiWare, or Virtual Console titles.



## Rearranging the contents of the SD Card

You can rearrange the contents of the SD Card by using the Wii Remote Plus. Point at the item you want to move, and then hold down the A and B Buttons and drag the item to the new location. Release the buttons to place the item in the new location.

## ■ Guidelines when using SD Cards

- Game Save data and add-on content will not be displayed on the SD Card Menu. To move or copy this type of content, use Data Management in the Wii Settings and Data Management option available from the Wii Menu screen. See the Wii Settings and Data Management section of this manual for more information.
- Some features of WiiConnect24 will not work with Channels when they are started from an SD Card. These features will only work with the Channels when they are moved or copied back into Wii system memory.
- Do not remove the SD Card or turn the power off when moving or saving data as this may cause the loss of data or damage to the Wii system or SD Card.
- If you re-purchase or re-download an updated version of a channel from the Wii Shop Channel, the older version of the channel saved to the SD Card may not run from the SD Card Menu.

## ■ Insufficient Wii System Memory

The SD Card Menu temporarily uses Wii system memory to startup a program. If there is insufficient Wii system memory to start a program, a screen will appear that will give you options for freeing up memory.



**Auto Manage**  
Automatically move programs

**Data Management Screen**  
Manually move programs

## Freeing memory using Auto Manage

Choose from one of four possible ways to automatically move programs from the Wii system memory to the SD Card to increase the amount of unused memory.



### • Not Launched Recently Move

programs to the SD Card starting with those that haven't been used for the longest amount of time.

**NOTE:** The "Not Launched Recently" option will not appear if there are a small number of programs in the Wii Menu.

### • From Right most Wii Menu Page

Move programs to the SD Card starting with those on the right side of the Wii Menu.

### • Lots of Blocks

Move programs to the SD Card starting with those that use up the most memory blocks.

### • A Few Blocks

Move programs to the SD Card starting with those that use up the fewest memory blocks.

## Freeing memory using Data Management Screen

Choose "Continue" to switch to the Data Management tool in the Wii Settings and Data Management option normally available from the Wii Menu screen.

From the Data Management tool, you can manually pick unused programs to move to the SD Card or delete them.

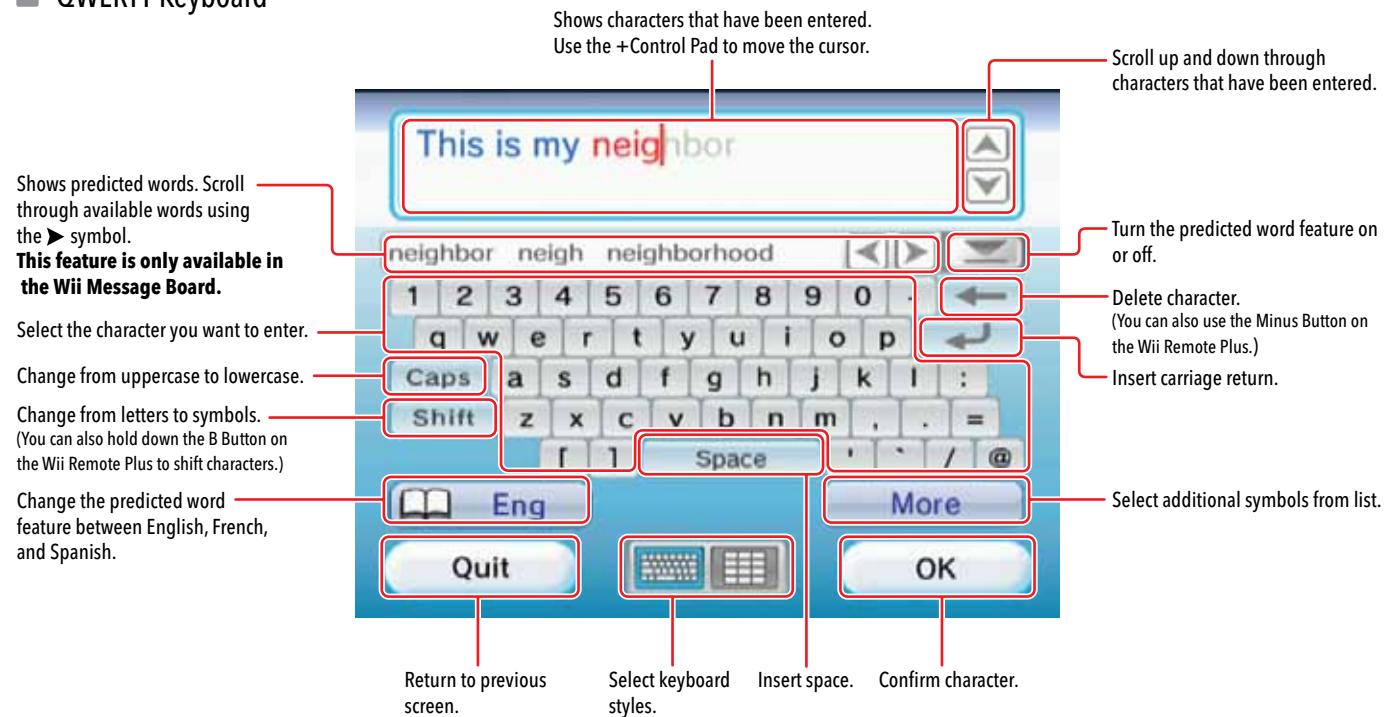


**NOTE:** If the SD Card has the same programs that are stored in the Wii system memory, the programs on the SD Card will be over-written by the programs being moved from the system memory.

## Using the Keyboards

The keyboard screen will appear in certain programs when you need to enter text. Examples include creating text for messages in the Wii Message Board or editing a Mii in the Mii Channel.

### ■ QWERTY Keyboard



### ■ Cell Phone-Style Keyboard



Example of using the predicted word feature on the Cell Phone keyboard for the word "hello."



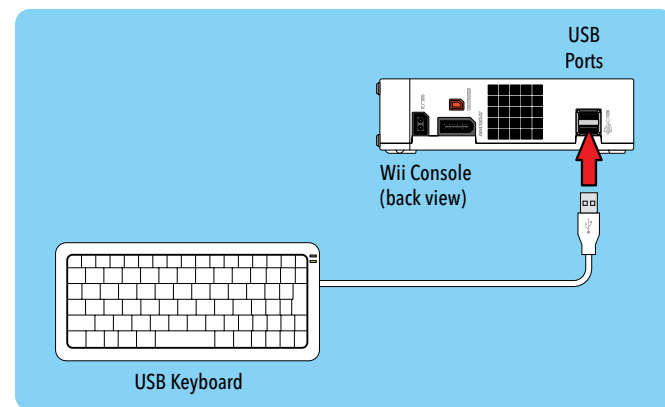
NOTE: Many functions on the QWERTY and cell phone-style keyboards are the same. Items with the same function are described on the QWERTY instruction page.

## USB Keyboard

### ■ Using a USB keyboard with your Wii Console.

You can enter text using a commercially available USB keyboard.

Please go to [support.nintendo.com](http://support.nintendo.com) for a list of keyboards that have been confirmed to work with the Wii console.



**NOTE: USB keyboards do not work with the Mii Channel or the Everybody Votes Channel.**

## Troubleshooting

**Before seeking assistance, review the following problems and solutions.**

### ■ Can't read the SD Card from Photo Channel or the SD Card Menu

- Make sure the memory card is fully inserted into the slot. Try removing and reinserting the memory card.
- Check the memory card on a PC or cell phone to verify its contents and readability.
- Make sure the data is in a readable format and 32GB or smaller in size. See page 23 for format information.

### ■ Wii Remote Plus doesn't vibrate

- Go to the HOME menu and check to see if the Rumble feature is turned on. (Page 65)
- Make sure that the game you are playing includes the Rumble feature.

### ■ No sound from the Wii Remote Plus speaker

- Go to the HOME menu and check to see if the Sound feature is turned on. (Page 65)
- Make sure that the game you are playing includes sound from the Wii Remote Plus speaker.

### ■ Can't download games in the Wii Shop Channel

- Make sure you have Wii Points to redeem for products on the Wii Shop Channel.
- Check to see if you have restrictions on using points.
- Check to see status of Parental Controls.

### ■ Downloading games and updates from the Wii Shop Channel is very slow.

- Switch the channel of your router to channel 1 or channel 11.

### ■ Your Access Point is not listed when "Search for Access Point" is selected

- Make sure your access point is powered on.
- Move closer to the access point if possible or re-orient the console so there is nothing between it and the access point.
- Your access point may not be broadcasting its SSID. Check your router settings through your computer and either set your router to broadcast SSID, or manually enter the SSID in Manually Connecting an Access Point, page 59.

### ■ Connection test unsuccessful or unable to connect to the service

- Check the signal strength and move closer to the access point if possible or re-orient the console so there is nothing between it and the access point.
- Make sure you have the latest Firmware Update for your router. Check with the router manufacturer or the Internet service provider that supplied the router.
- You may have to adjust the transmission rate of your router. Some routers have settings like "Turbo Boost" or "G-Nitro". These may have to be turned off.
- Your access point may have Mac Filtering enabled. Check your router settings through your computer. You may need to enter your Wii console MAC address. This can be found in Console Information in the Internet settings choice.
- Your access point may not be broadcasting its SSID. Check your router settings through your computer and either set your router to broadcast SSID, or manually enter the SSID in Manually Connecting an Access Point, page 59.
- Try assigning the Wii a static IP address. Access your router's settings and find the available range of IP addresses (This is typically found within the DHCP information.). When you find this information, select one of the available IP addresses and enter this in Manually Connecting an Access Point, page 59.

### ■ The power shuts off suddenly

- Unplug the AC Adapter and check the vents for blockage by dust or debris. Clean if necessary, reconnect the AC Adapter and try powering on the Wii Console again.
- Make sure there is proper ventilation around the Wii Console and that it is not close to other heat sources.

### ■ Controllers don't work with Wii games, Virtual Console games or WiiWare games.

- Make sure you are using the correct controller. Both the game packaging and the Instruction booklet included with the game supply this information.
- If you are playing a game you have downloaded from the Wii Shop Channel, be sure to check the Details screen on the Wii Shop Channel to determine what controllers are used for each game.
- If using the Classic Controller or Classic Controller Pro, make sure it is securely connected to the Wii Remote Plus.
- If using the Wii Remote Plus, make sure no other accessories are plugged into the External Extension connector unless required by the game you are playing.
- Make sure the Wii Remote Plus is synchronized with the Wii console.

**More troubleshooting is available at [support.nintendo.com](http://support.nintendo.com), including more detailed setup help for getting connected online.**

**If your Wii system still does not operate correctly after trying the troubleshooting steps, DO NOT return the console to the store. You will lose saved game data and all Wii Shop Channel downloads and Wii Points. Visit [support.nintendo.com](http://support.nintendo.com) for assistance and additional troubleshooting and repair options or call 1-800-255-3700.**



# Error Messages

If an error occurs, a message like the following may appear on the TV screen. Proceed according to the following table.

Error Message	Try This
Error Occurred. Press the Eject button and remove the disc. Turn the power off and follow the instructions in the console manual.	First turn the Wii console power OFF, and remove the AC adapter's AC plug from the power socket. Next, check whether the disc is dirty or scratched. If it is dirty, gently wipe with a soft cloth from the center to the outside. Wait about 5 minutes. Then plug the AC adapter's AC plug back into the power socket and turn the console power on. If the same message still appears, the Wii console may be damaged. Turn the Wii console off immediately. Remove the AC adapter's AC plug from the plug, and visit support.nintendo.com for additional troubleshooting or call 1-800-255-3700.
Wii Remote error. For details read the console manual.	See Wii Remote Plus troubleshooting in the Wii Operations Manual - System Setup, page 34.
Could not read the disc. For details read the console manual.	There may be dirt or scratches on the disc or internal lens. First remove the disc and gently wipe from the center to the outside with a soft cloth. You can also try using the Wii Lens Cleaning Kit (sold separately) to clean the internal lens. Then re-insert the disc in the Wii console and turn the power on again. If the same error message still appears, visit support.nintendo.com for additional troubleshooting or call 1-800-255-3700.
Insufficient free space in Wii console save memory. Use the File Edit Screen and move file to SD card or delete file.	Use the Data Management options and move file to SD memory card or delete file. See the Settings section in the Operations manual, Data Management, page 40.

Error Message	Try This
Insufficient number of free files in Wii console save memory. Use the Data Management option and move file to SD card or delete file.	Use the Data Management options and move file to SD memory card or delete file. See the Settings section in the Operations manual, Data Wii console save memory is corrupted. Visit support.nintendo.com for additional troubleshooting or call 1-800-255-3700. Management, page 40.
Wii console save memory is corrupted. For details read the Wii console manual.	Wii console save memory is corrupted. Visit support.nintendo.com for additional troubleshooting or call 1-800-255-3700.
Abnormal free space in Wii console save memory. For details read the Wii console manual.	Delete the save data for the channel that is running. If the same error message still appears, visit support.nintendo.com for additional troubleshooting or call 1-800-255-3700.
Abnormal number of files in Wii console save memory. For details read the Wii console manual.	Delete the save data for the channel that is running. If the same error message still appears, visit support.nintendo.com for additional troubleshooting or call 1-800-255-3700.
The device inserted in the SD Card slot cannot be used.	<ol style="list-style-type: none"><li>1. If you are using an SD Card Check the content of the SD Card on a PC. If you cannot see your file, the SD Card may be damaged.</li><li>2. If you are using an SDHC Card The way an SDHC Card is used depends on the Wii software you are using. Refer to the packaging or manual for the software you are using to see if SDHC Cards are supported.<ul style="list-style-type: none"><li>• If using Wii software that supports SDHC Cards – try removing the SDHC Card and re-inserting it. If the same message is still displayed, check the content of the SDHC Card on a PC. If you cannot see your file, the SDHC Card may be damaged.</li><li>• If using Wii software that does not support SDHC Cards – You cannot use SDHC Cards with the software, try using an SD Card.</li></ul></li></ol>

Error Codes

If an error code appears during operation of the Wii system, please review the following tables and try the recommended solutions.

Error Code	Try This
110210 110211 110212 110213 205926 205927 205928	These errors indicate a hardware issue. Please contact Nintendo Consumer Service at 1-800-255-3700 for assistance.
51300 – 51399 209600, 209601	<p>These errors generally indicate the inability to get a good connection due to wireless interference. Try the following:</p> <ul style="list-style-type: none"><li>• Check the location of your router. Move your router away from walls and off the floor and try to place it in a central location in your home. Also, keep it away from metal objects such as metal filing cabinets which can cause interference.</li><li>• Do not use other wireless or cordless devices when trying to get online with your Wii. Also, avoid electronics that use the 2.4GHz frequency, instead look for devices that use the 5.8GHz or 900MHz frequencies.</li><li>• Change the channel on your router. By default most routers broadcast on channel 6. Change the channel setting to 1 or 11, as they do not overlap with other channels.</li><li>• If you have security on your router, verify that the WEP or WPA key that was entered into your Wii matches the router's information exactly.</li><li>• Change the mode on the router to "mixed" or "b/g" mode. This is generally found in the "Wireless" section of your router's settings.</li></ul>

Error Code	Try This
52200-52235 32004	<p>These errors generally indicate a firewall on your PC or router is preventing the Wii from connecting to the internet. Try the following:</p> <ul style="list-style-type: none"><li>• Disable your firewall. If you are using a Netgear router, disable the "SPI Firewall" under the "WAN Setup" of your router.</li><li>• Some Internet Service Providers (ISPs) prevent systems from connecting. Check with your ISP to see if they are compatible.</li></ul>
52240-52245	Errors in this range generally indicate the router in your setup has a default IP address of either 192.168.0.1 or 192.168.1.1. This will need to be changed to 192.168.2.1.
220602 32002	<p>These errors indicate a problem with the Internet Settings entered into the Wii. Try the following:</p> <ul style="list-style-type: none"><li>• Use the Manual Settings (rather than Search for an Access Point) to set up your Internet Settings on the Wii. Manually enter the DNS settings of your PC or Router into your Wii when requested.</li></ul>